



REALIZZAZIONE DI UNA RETE A BANDA LARGA PER L'ACCESSO AD INTERNET PER L'AREA DEL GAL ISC MADONIE

PROGETTO DEL SERVIZIO

Analisi di copertura FWA
Art. 23, comma 15, D. Lgs. 18 aprile 2016, n. 50

Tav_06

Rev_01 del 24/11/2023

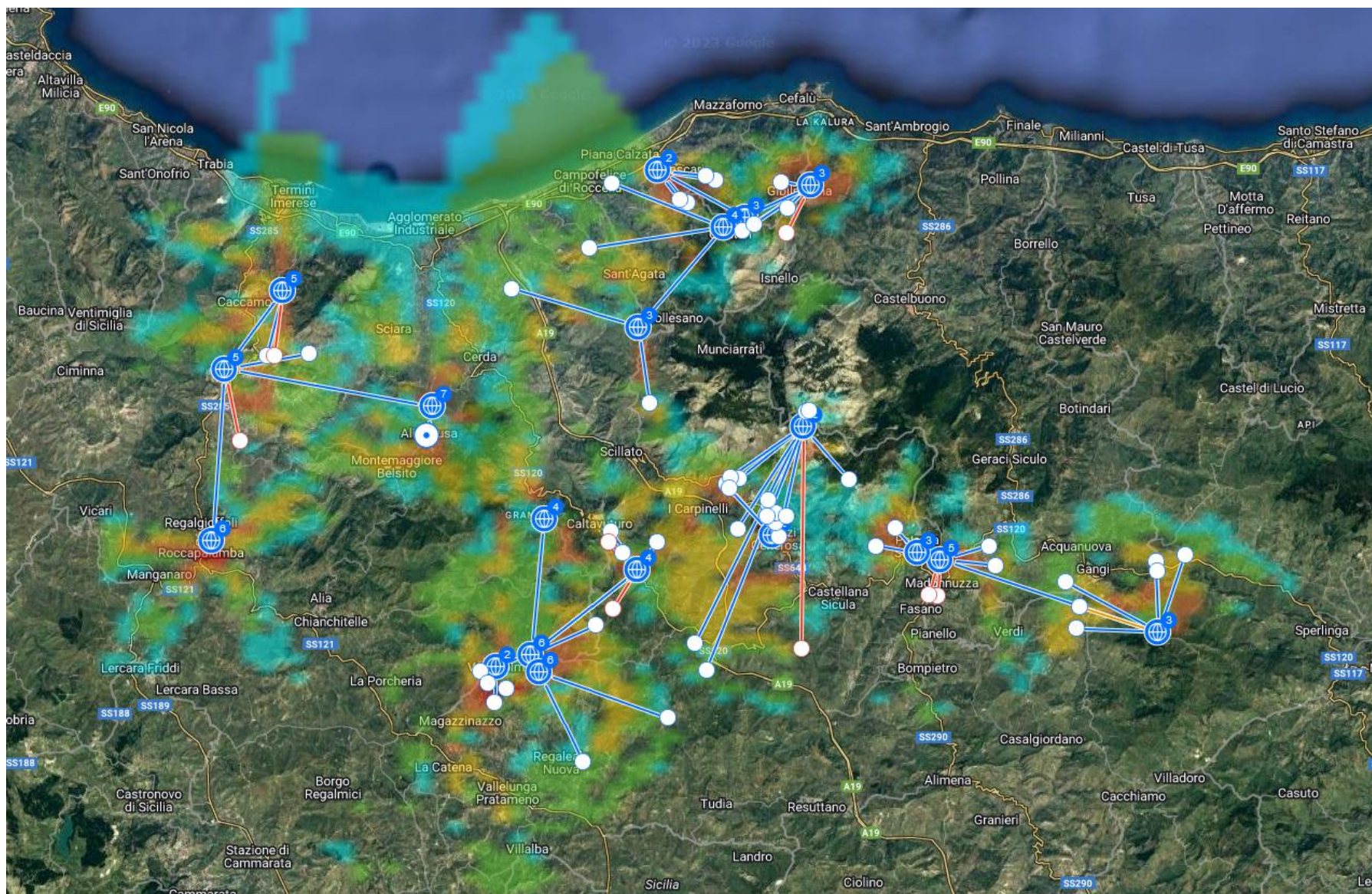
Ing Gioacchino DI GARBO
Progettista

Dott. Francesco MIGLIAZZO
Presidente C.d.A. GAL ISC Madonie

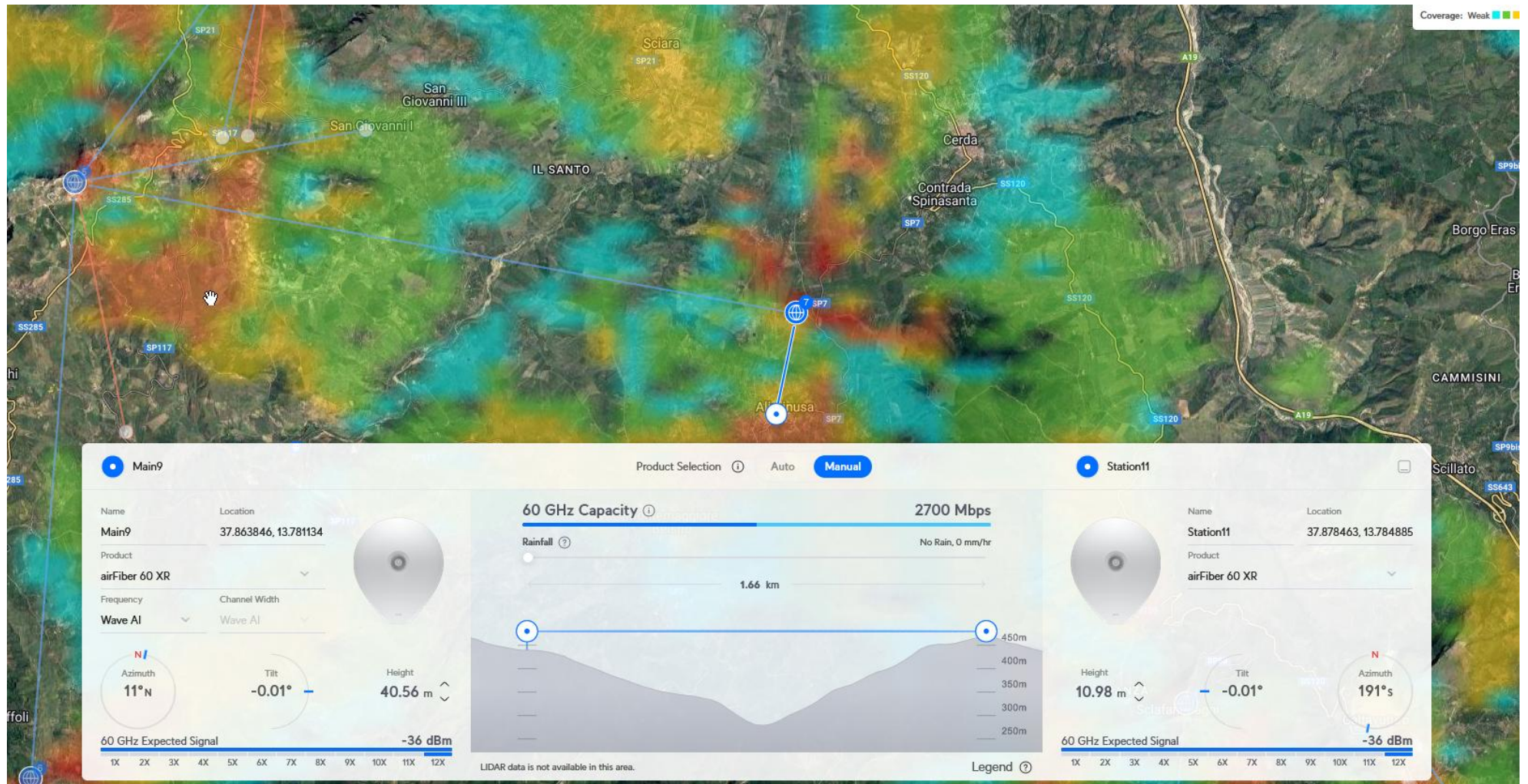
Dott. Dario COSTANZO
Direttore GAL ISC Madonie

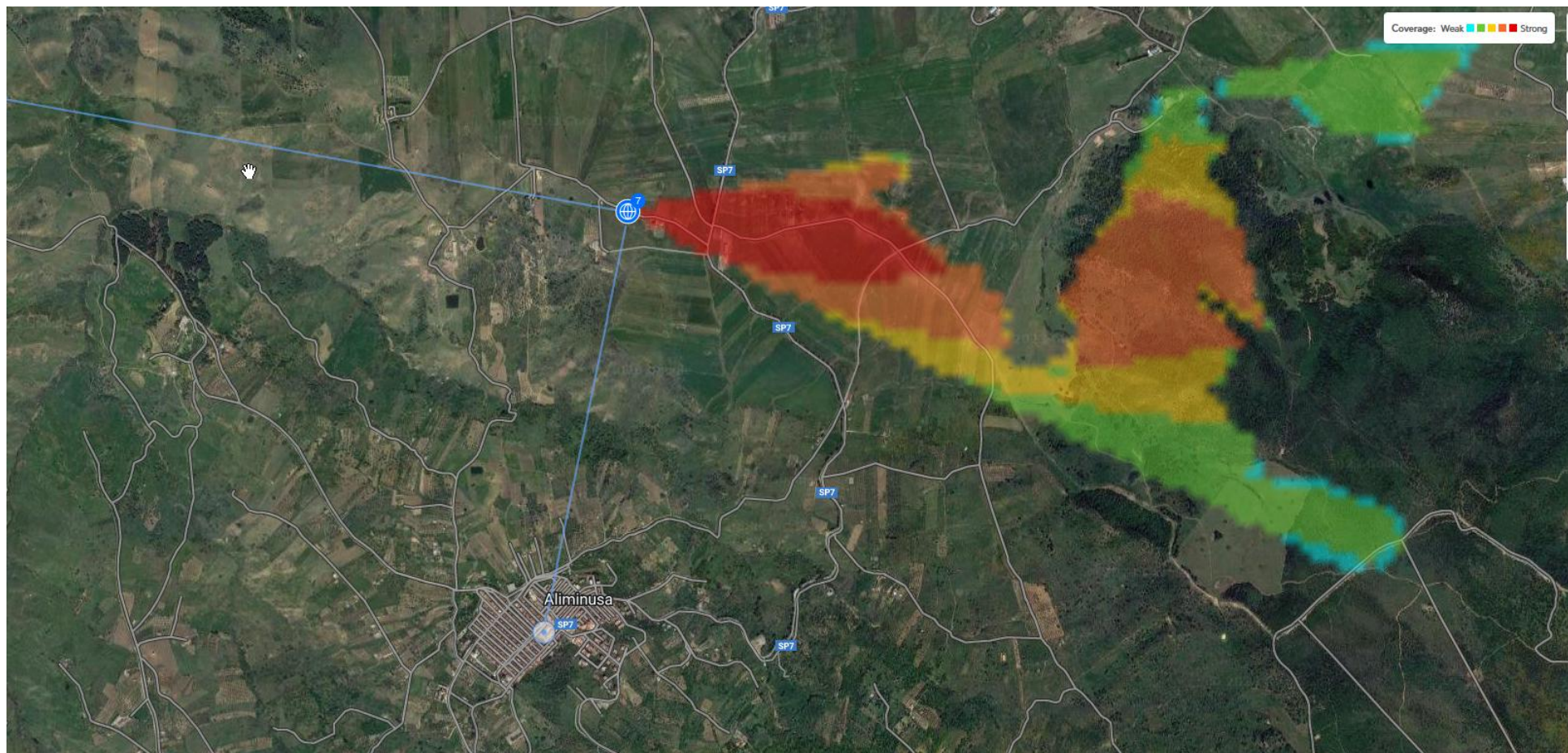
Dott. Giuseppe FICCAGLIA
R.U.P.

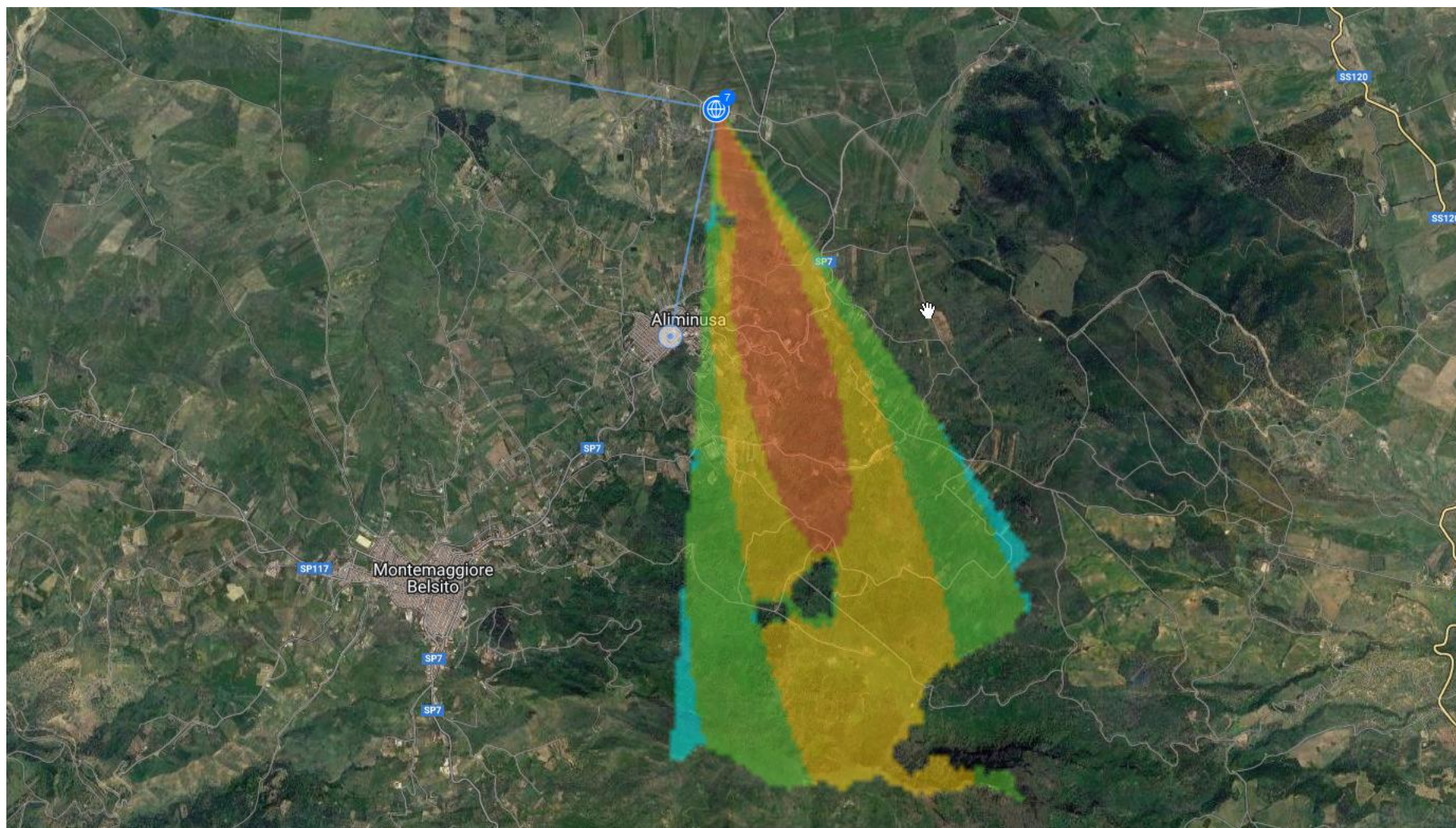
Ipotesi di copertura

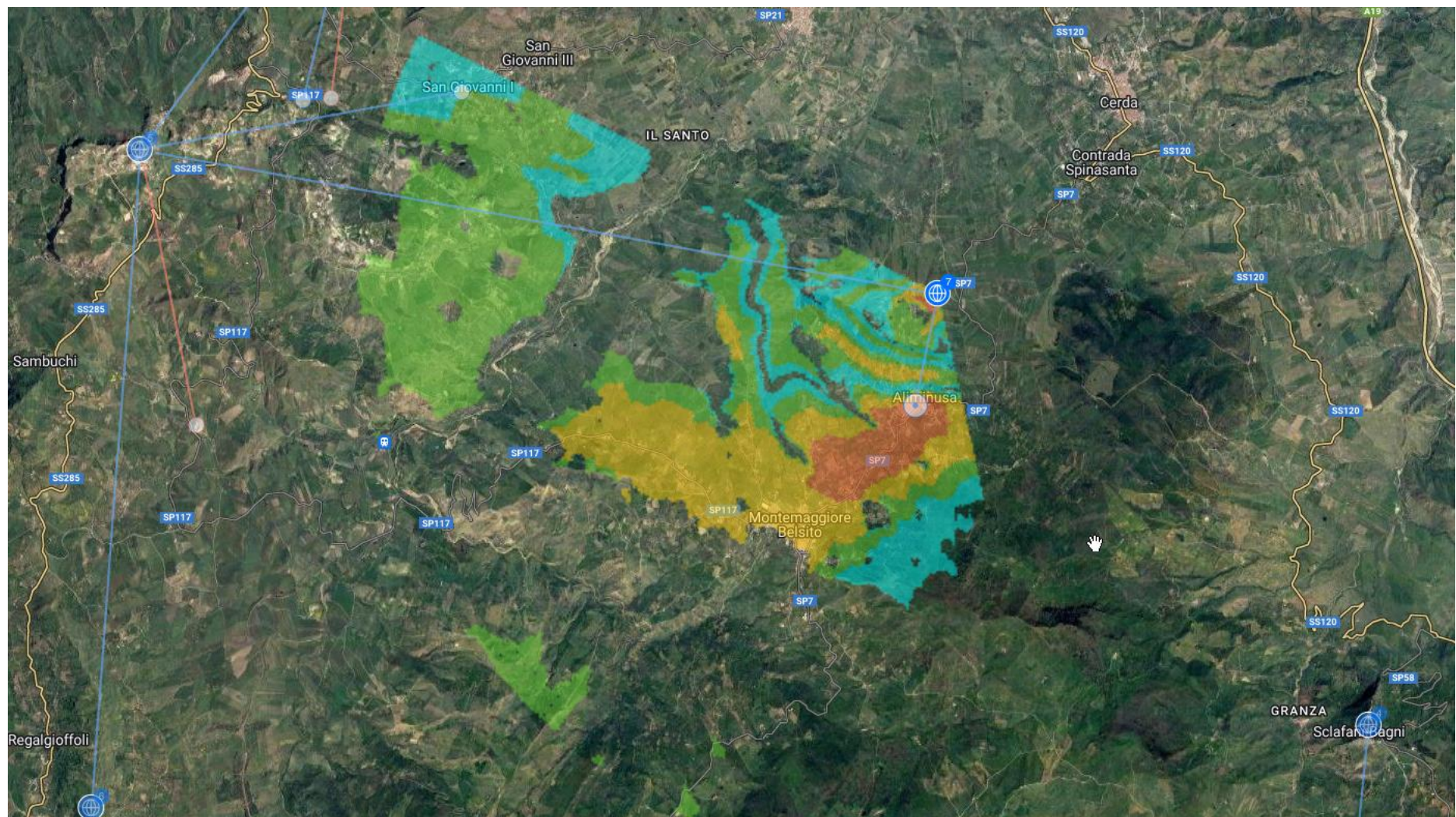


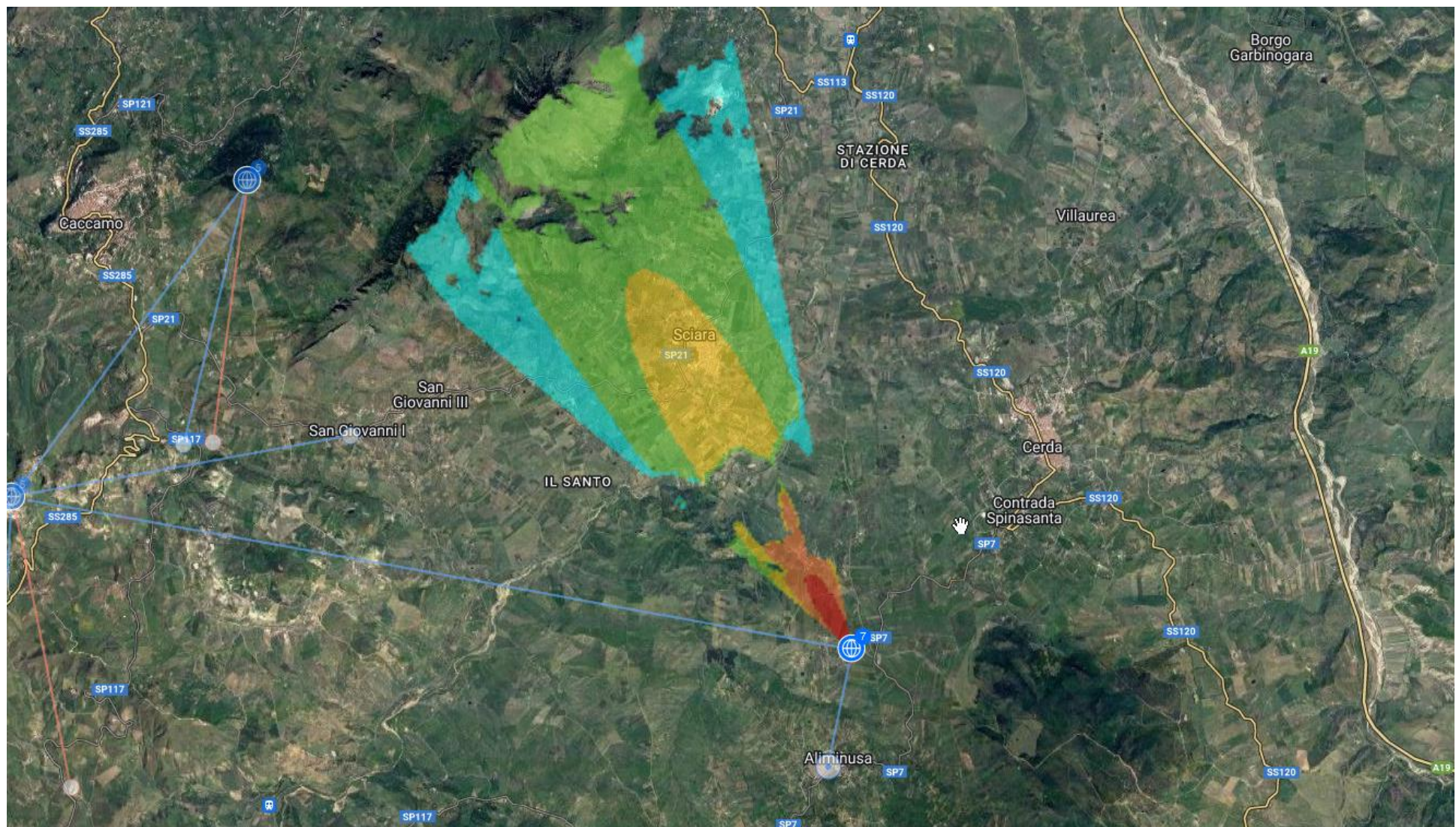
ALIMINUSA



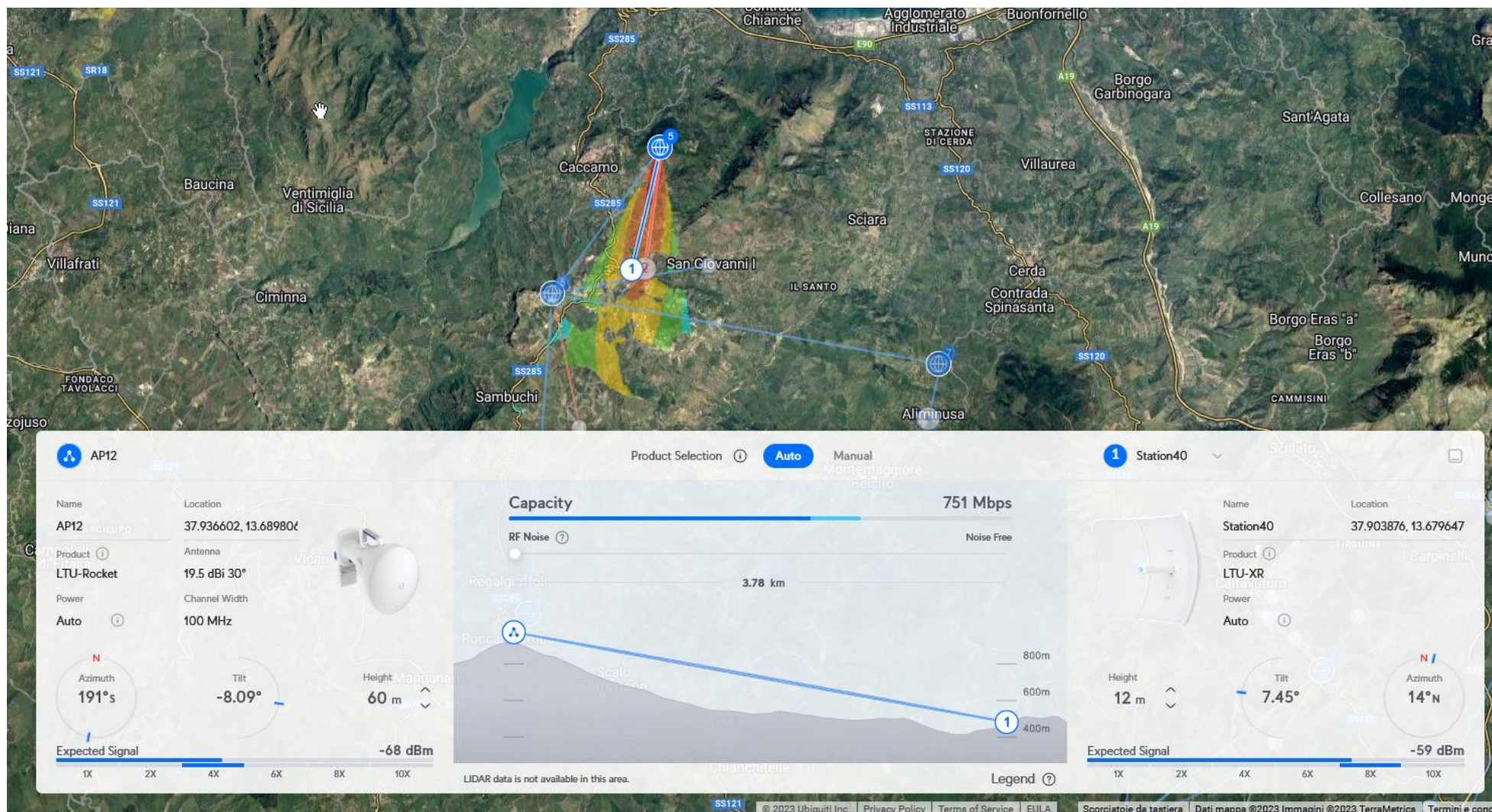


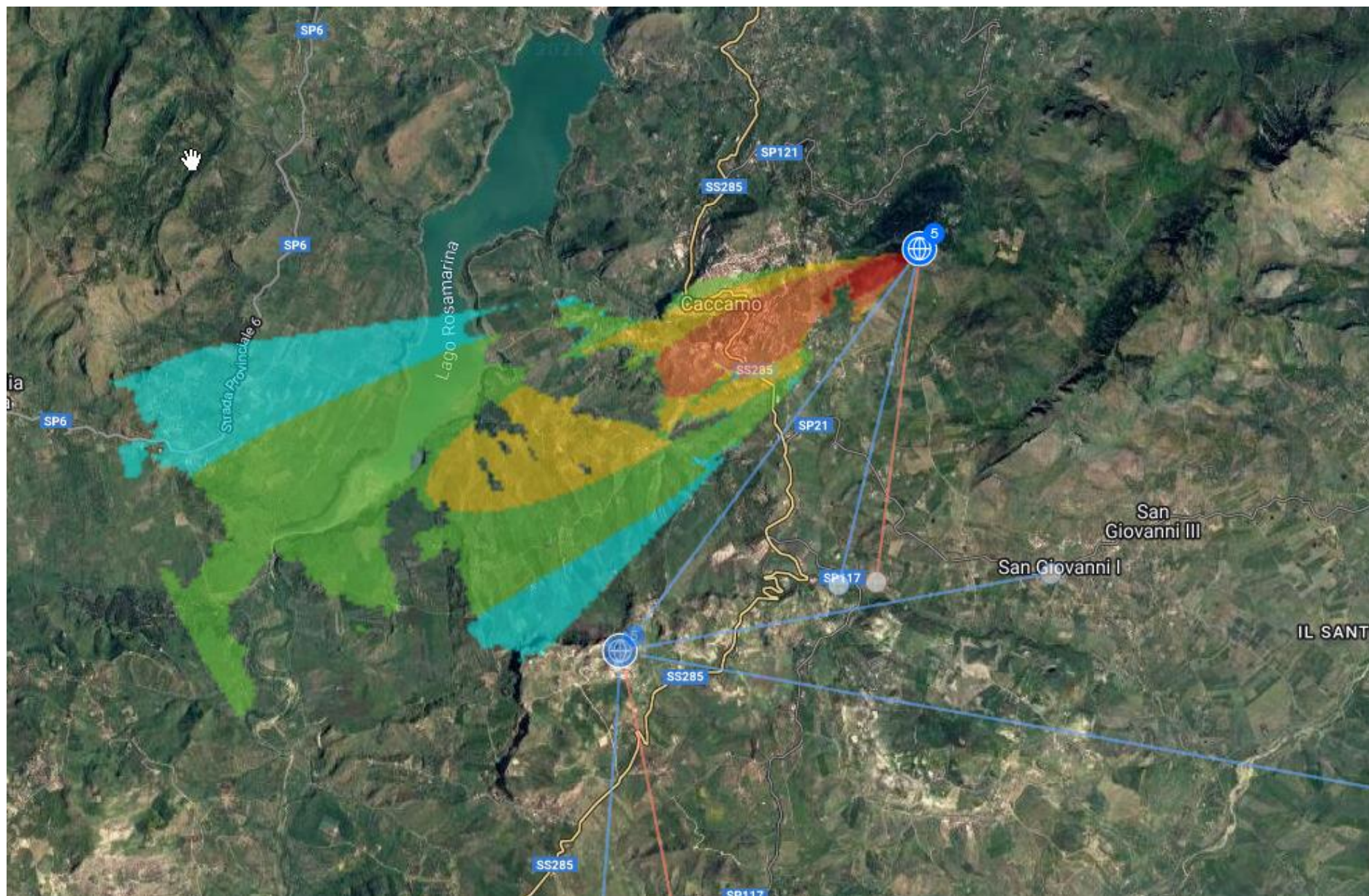


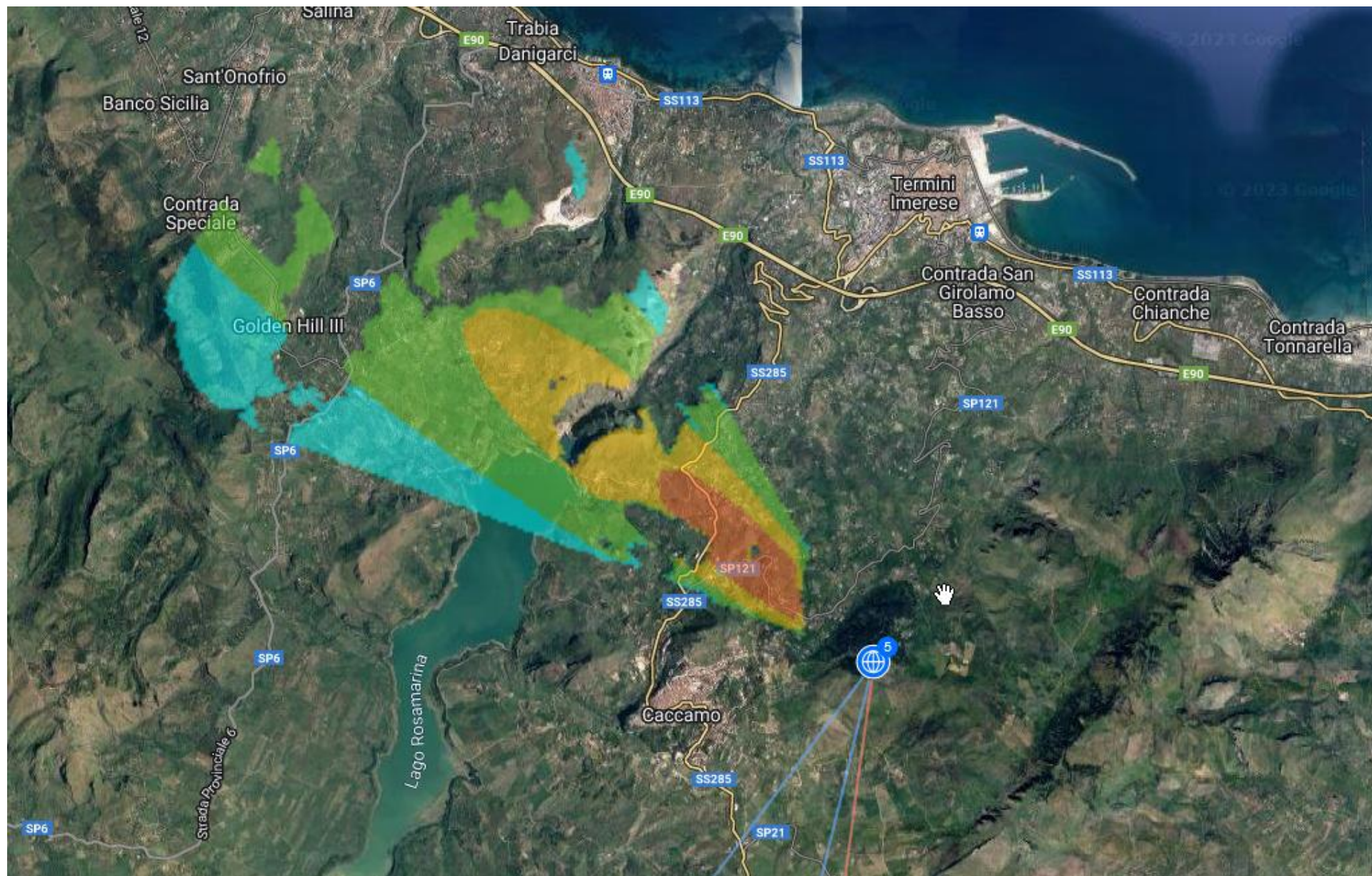


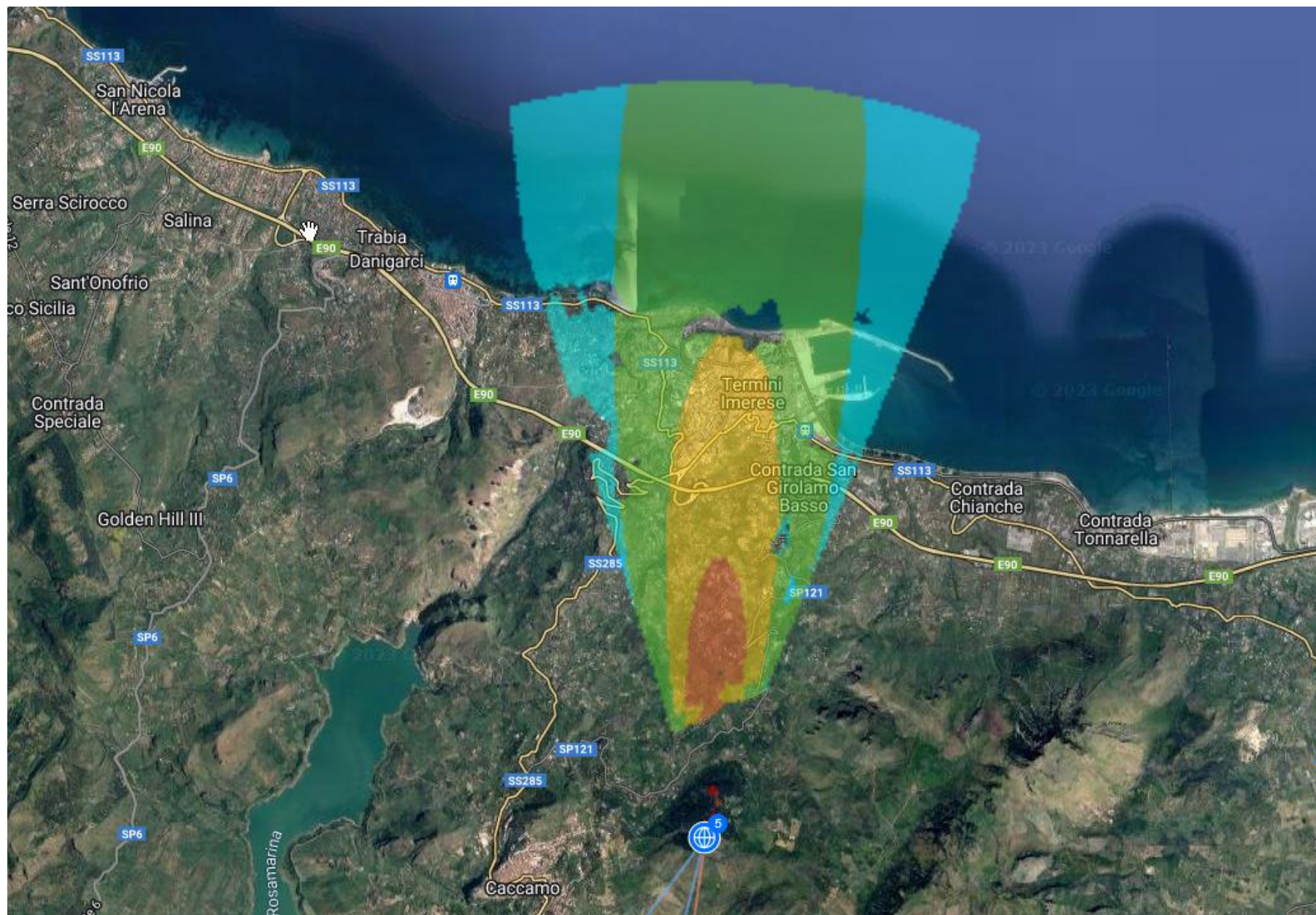


CACCAMO Monte Rotondo

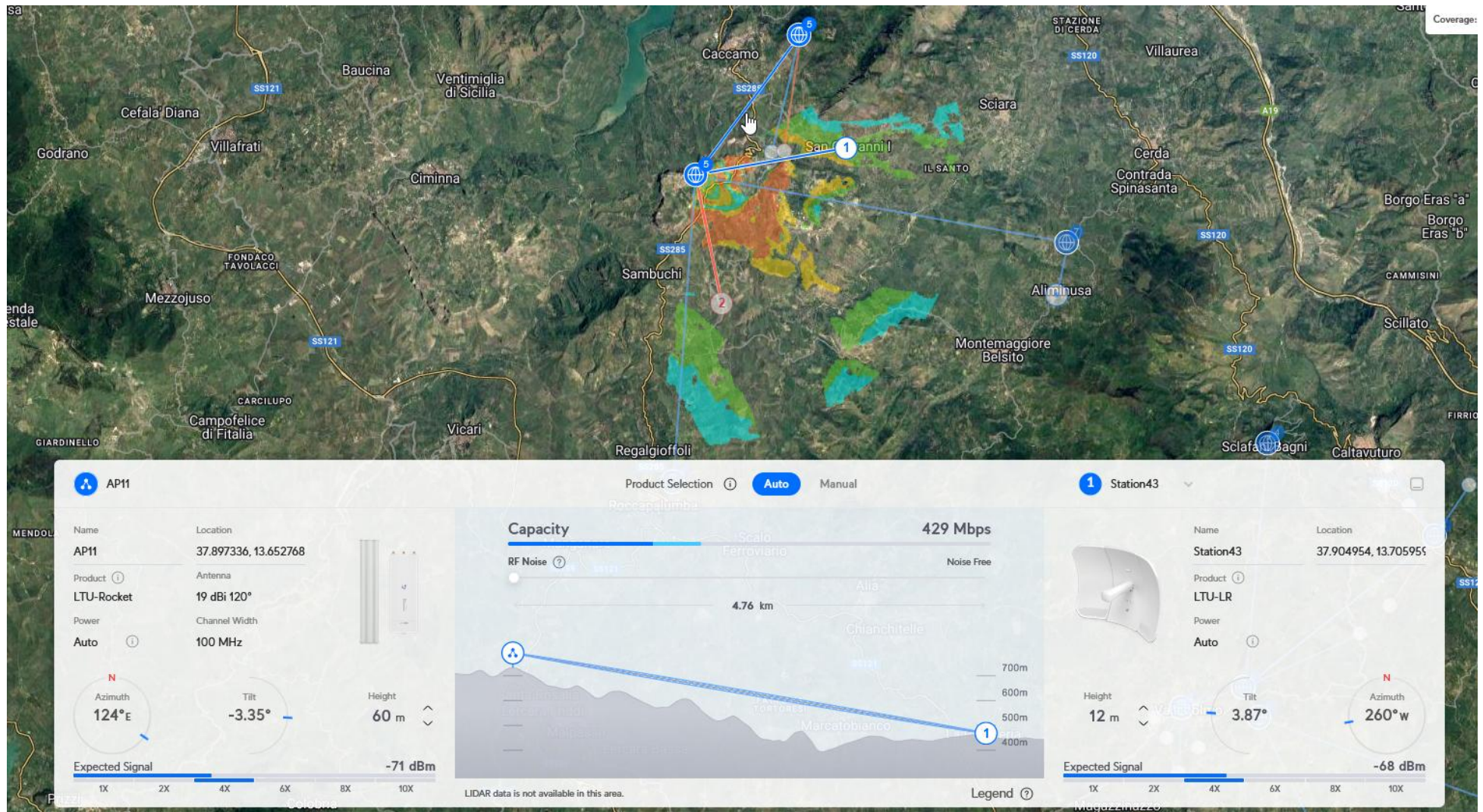


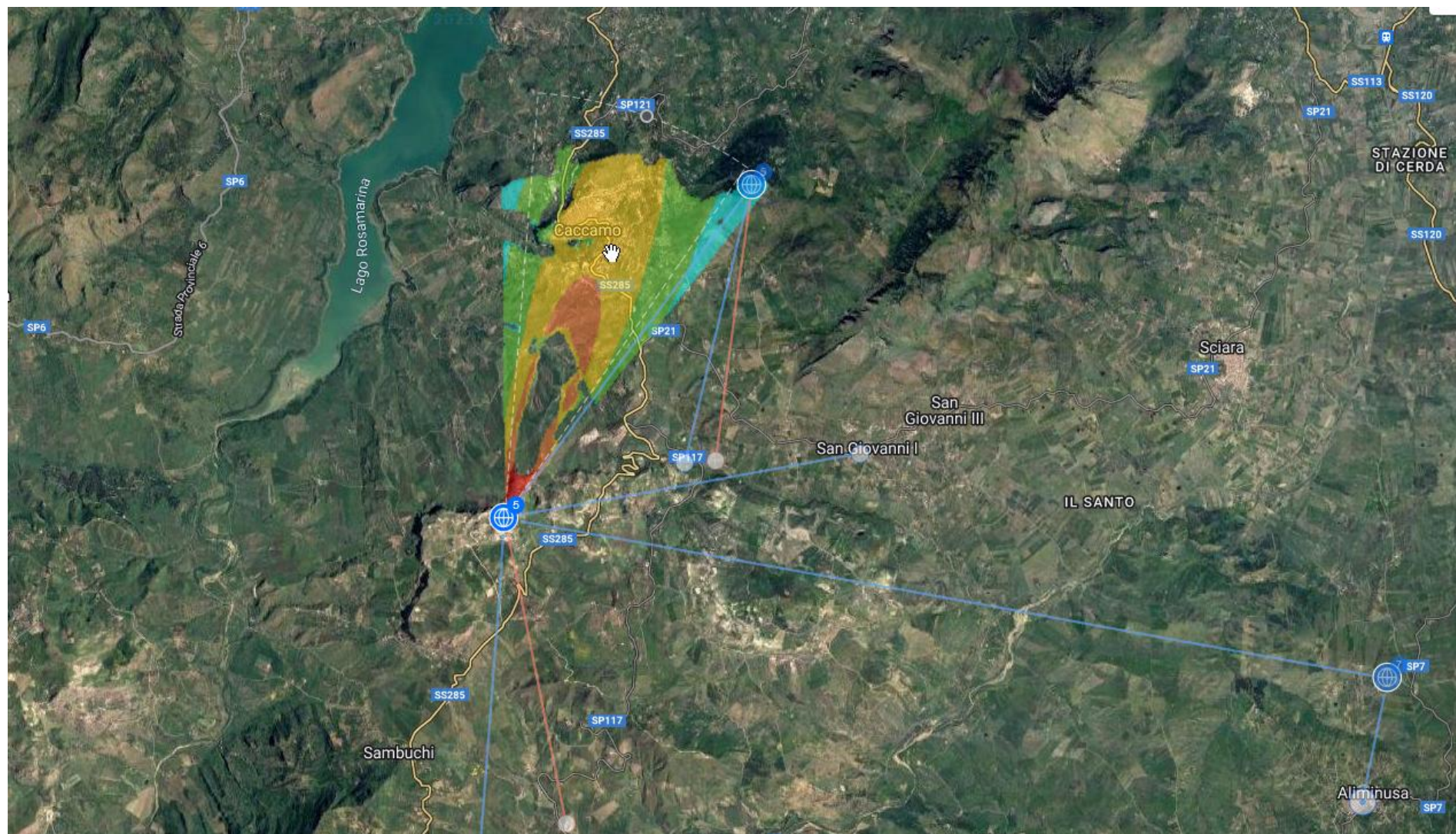




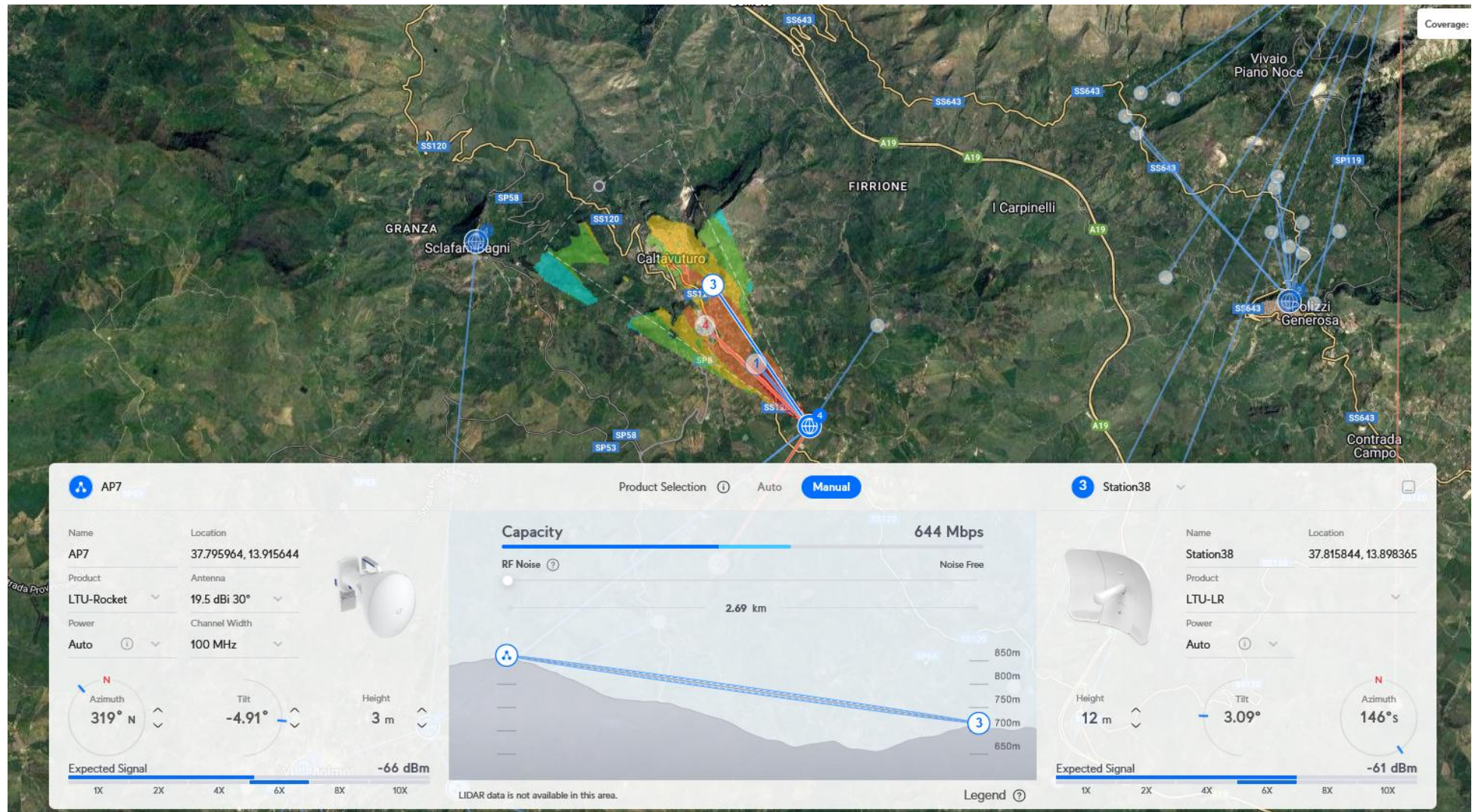


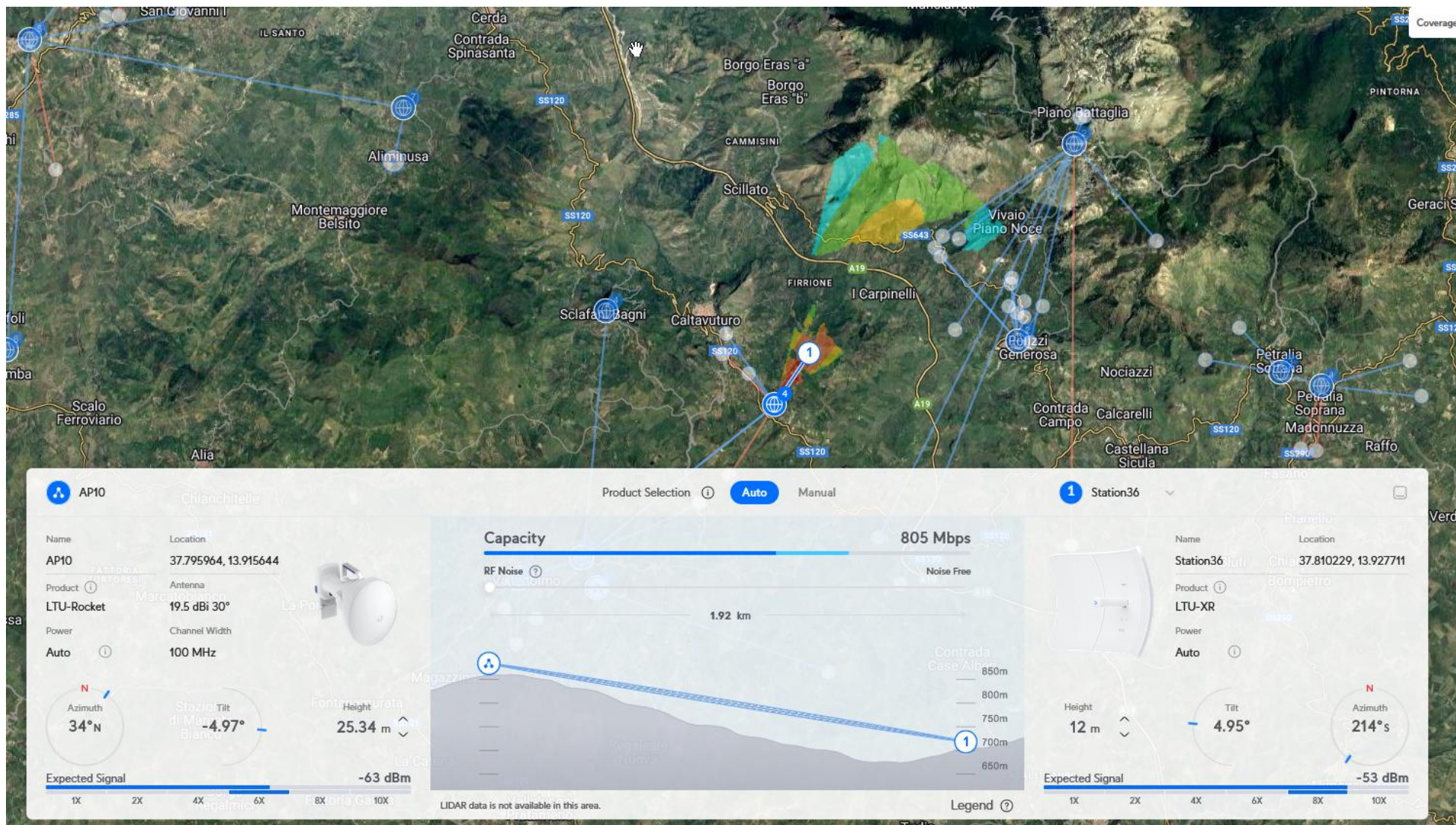
CACCAMO Monte Miciotto





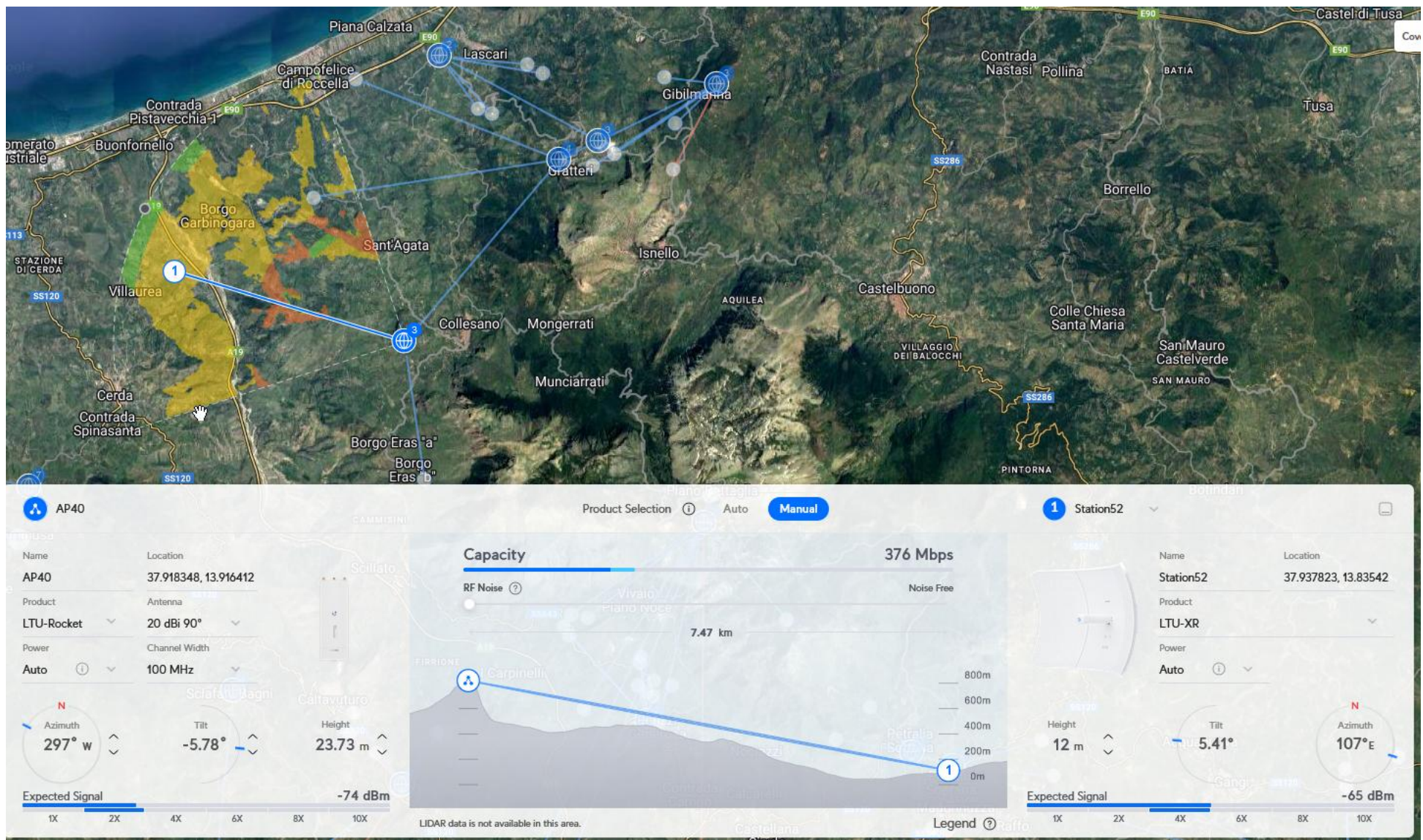
CALTAVUTURO



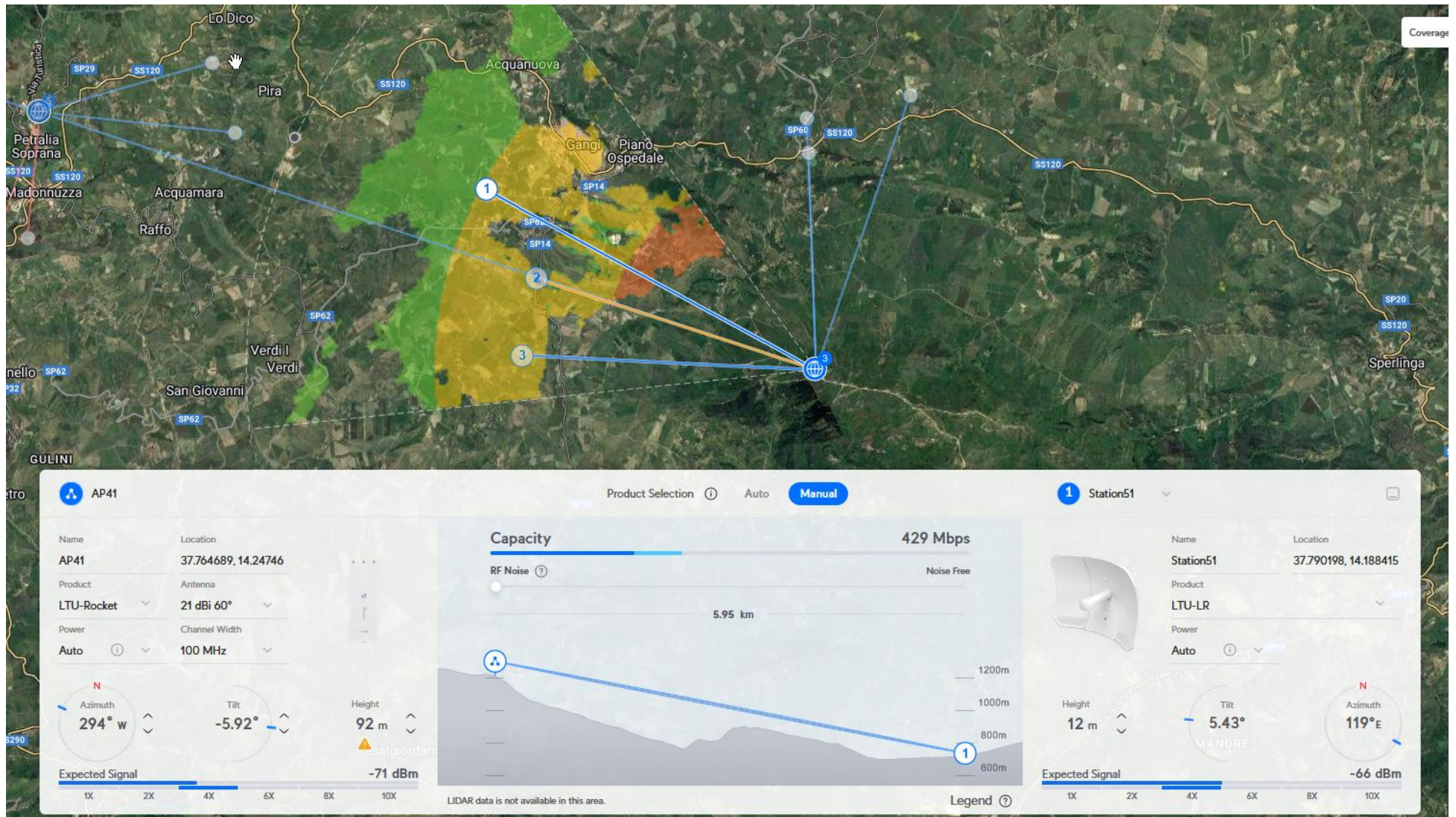


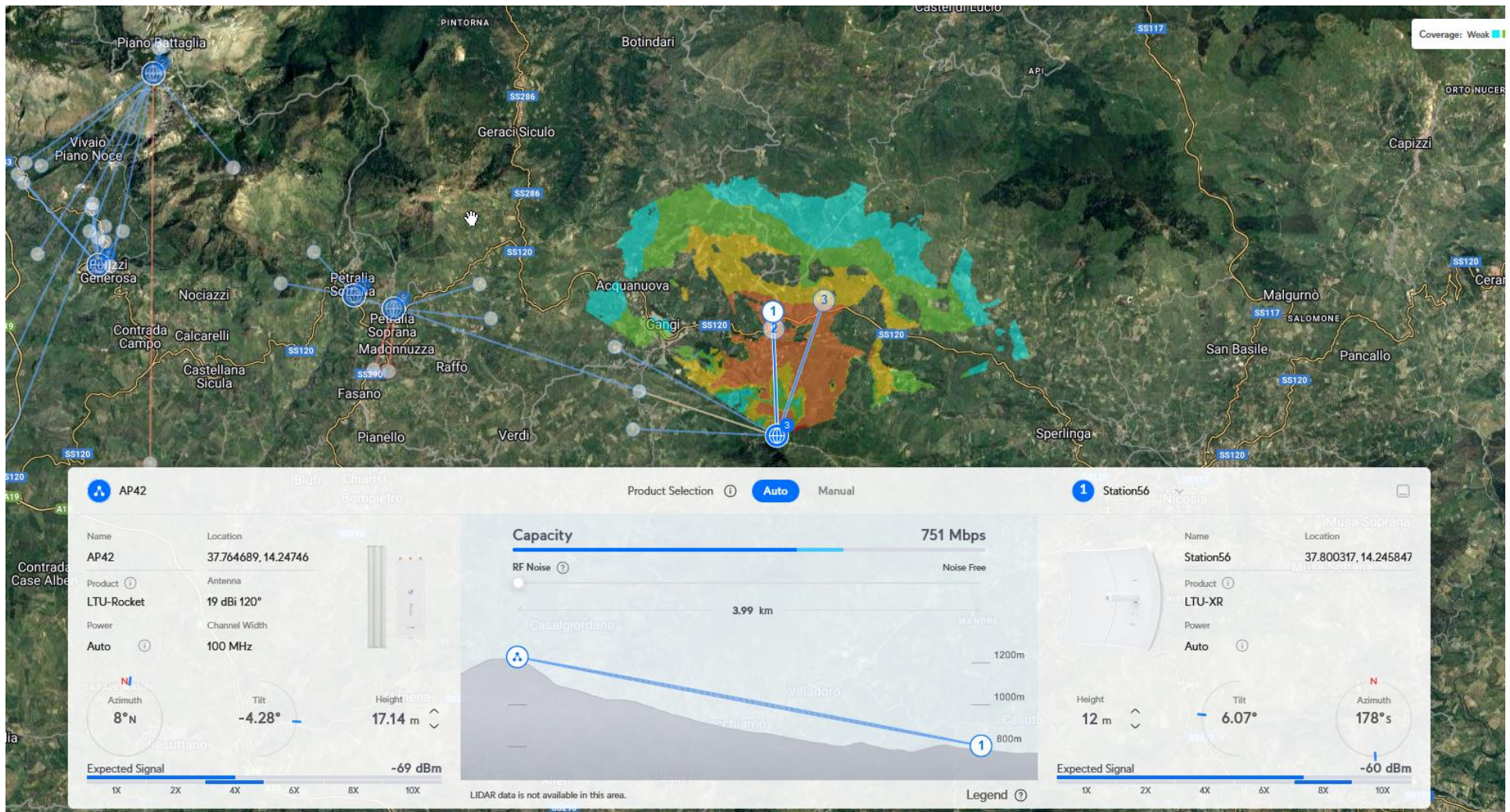
COLLESANO



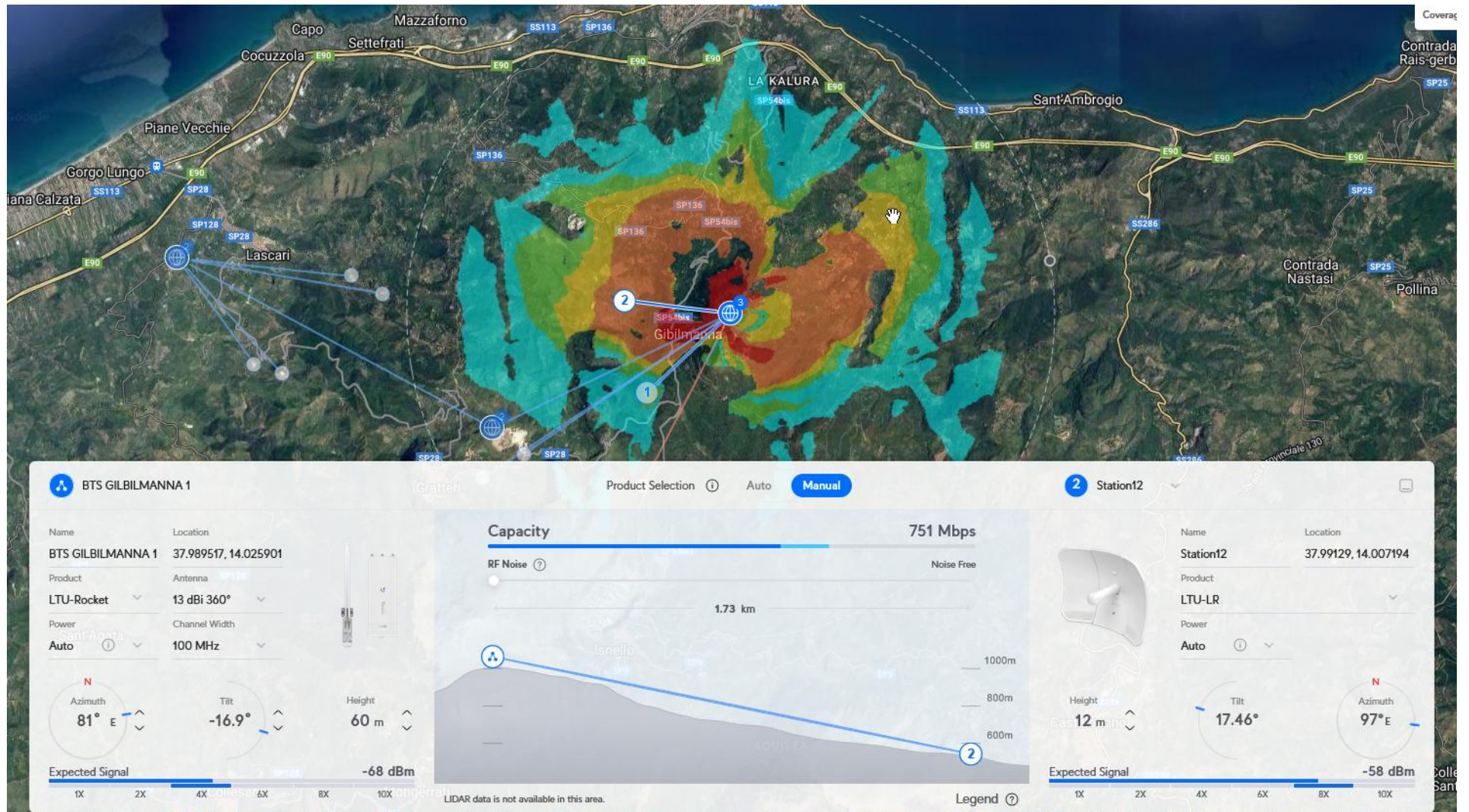


GANGI

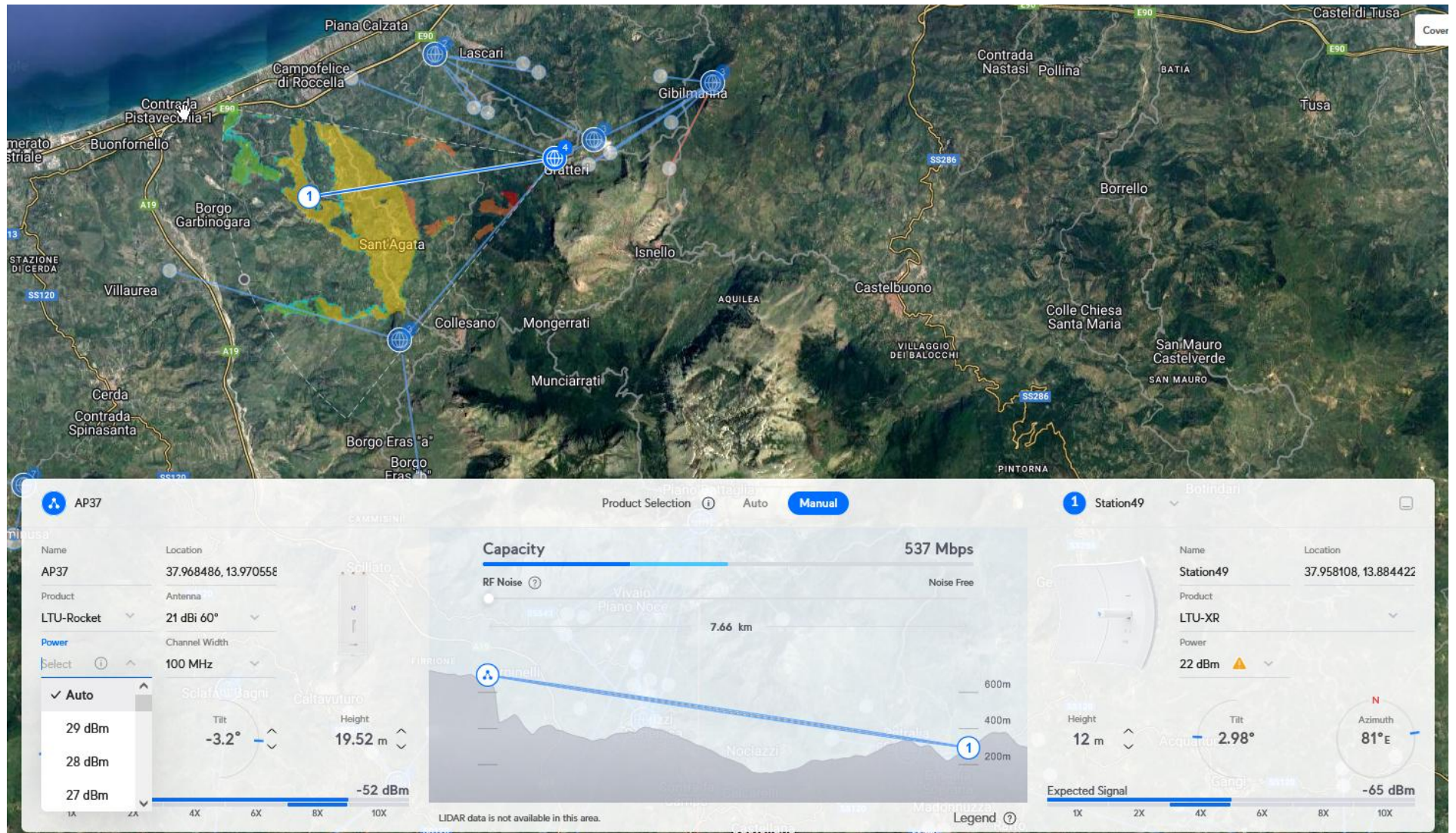




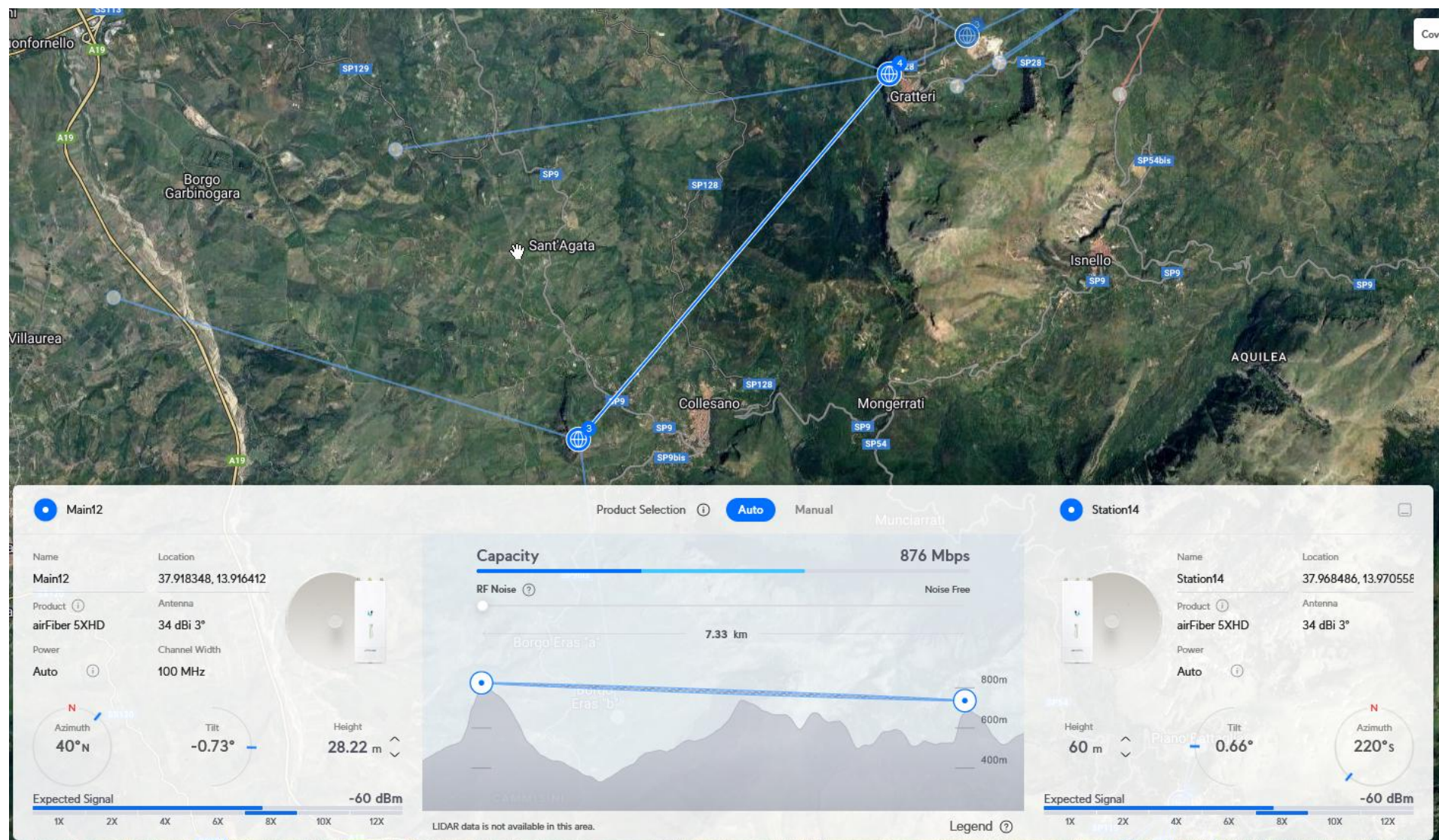
GIBILMANNA



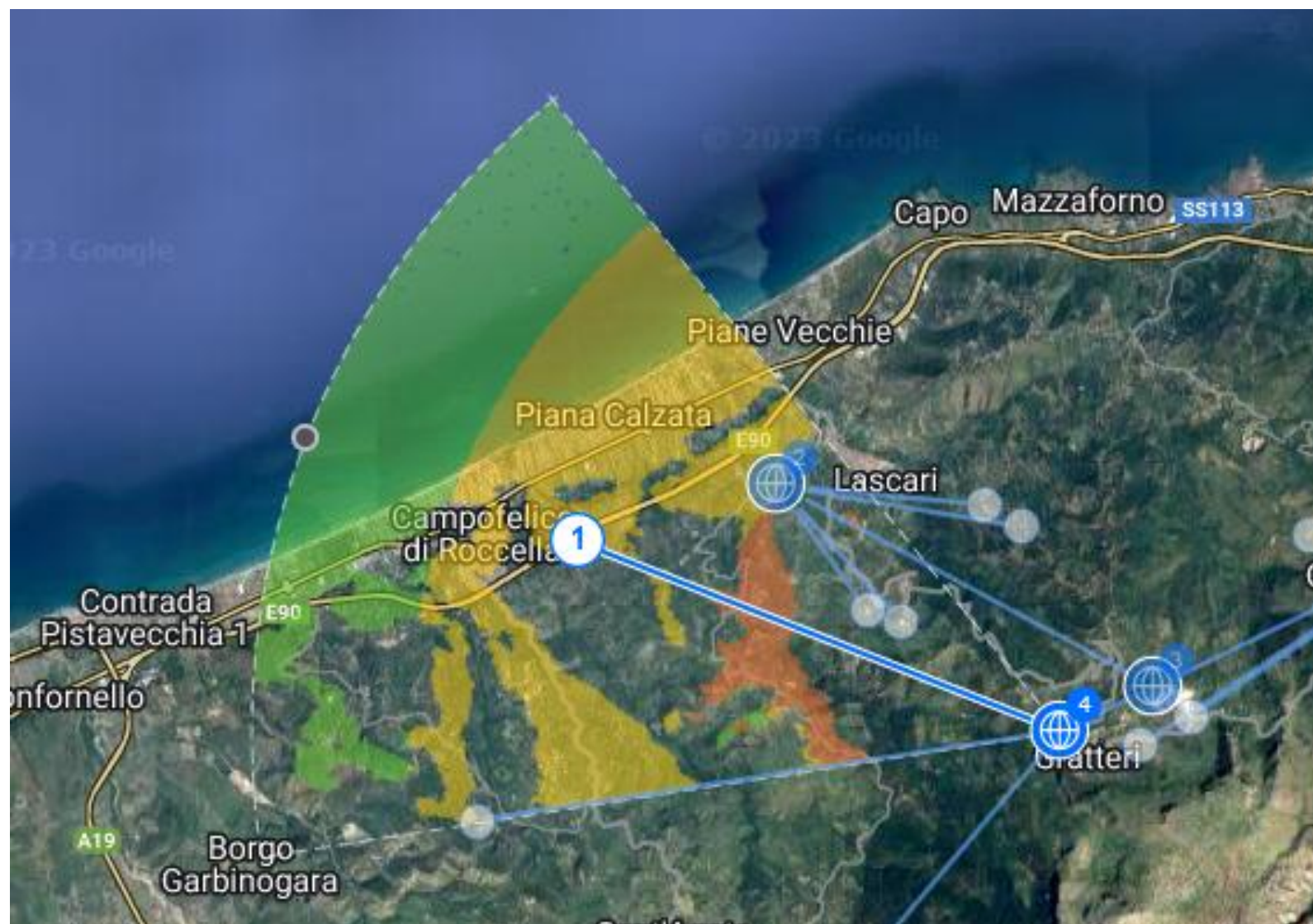
GRATTERI



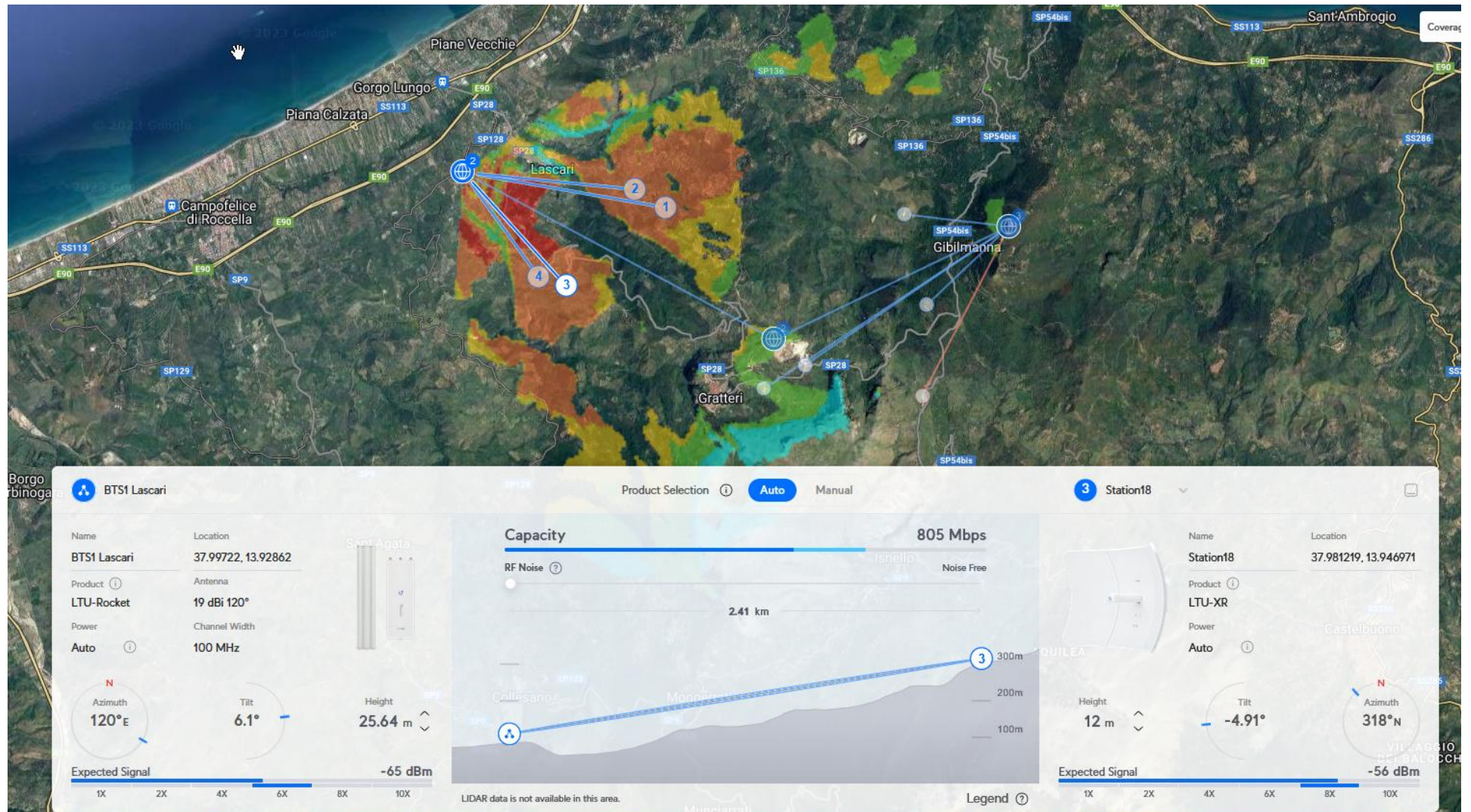
GRATTERI-COLLESANO per rilegamento



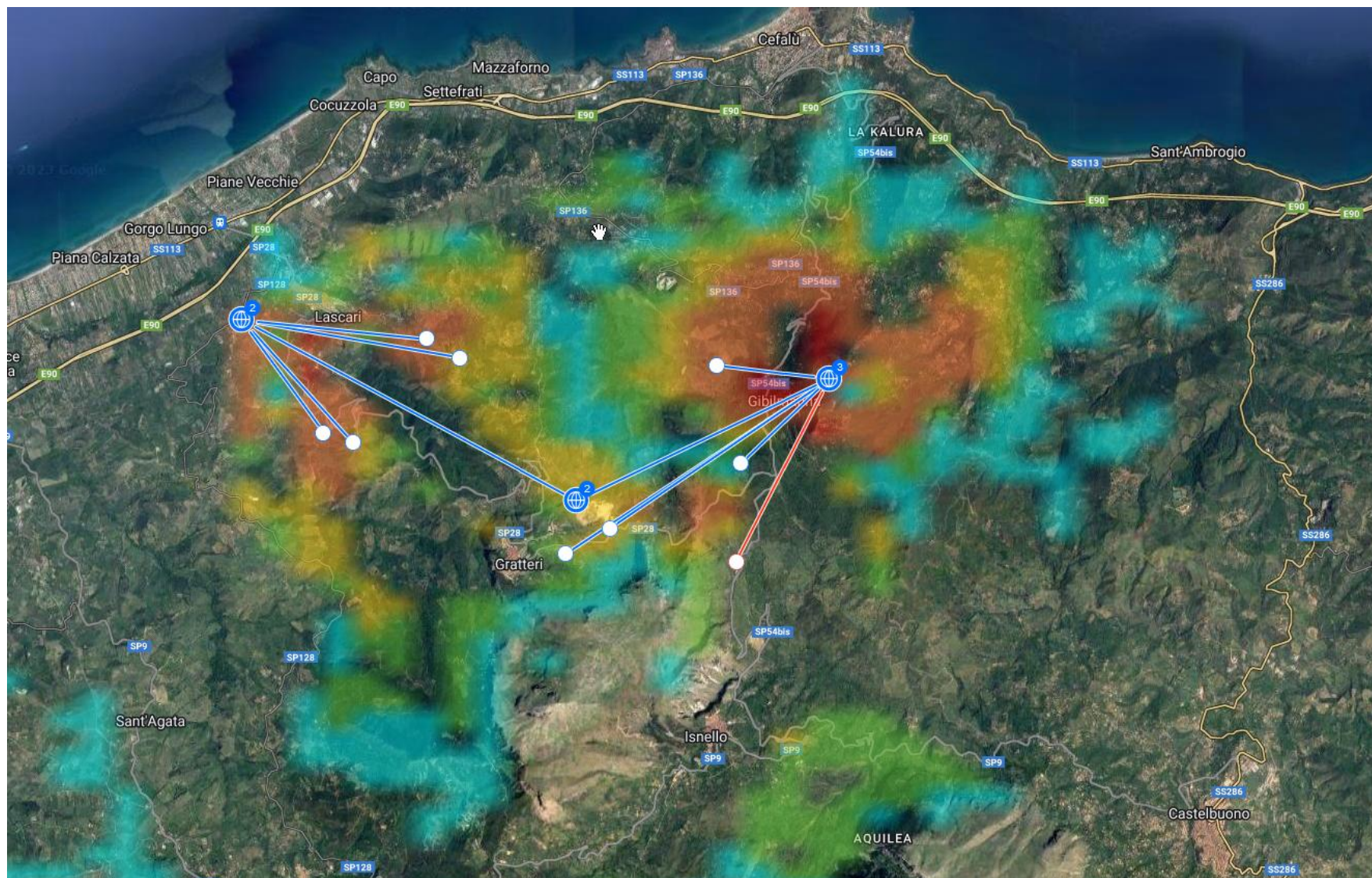
GRATTERI-CAMPOFELICE DI ROCCELLA



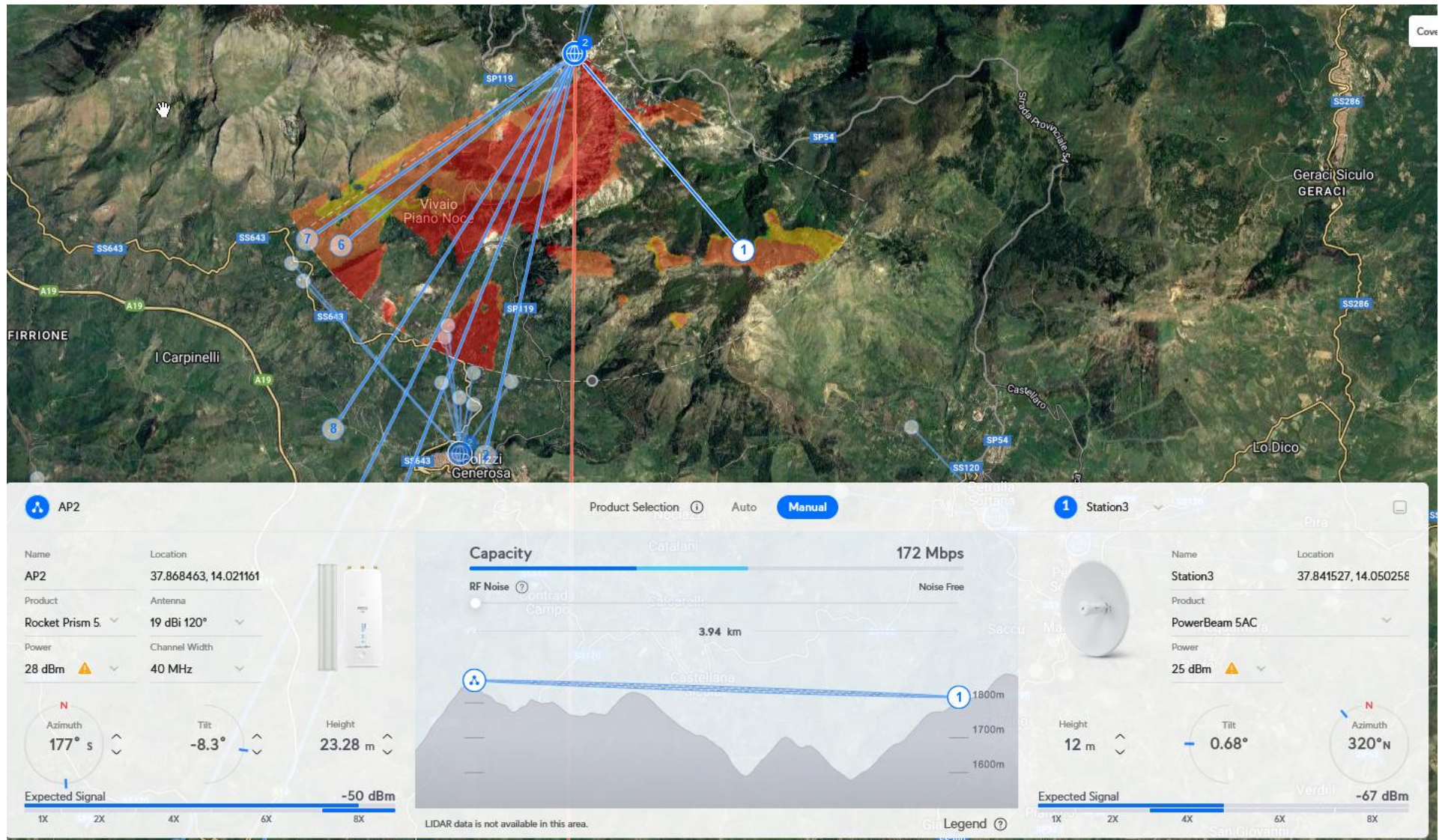
LASCARI

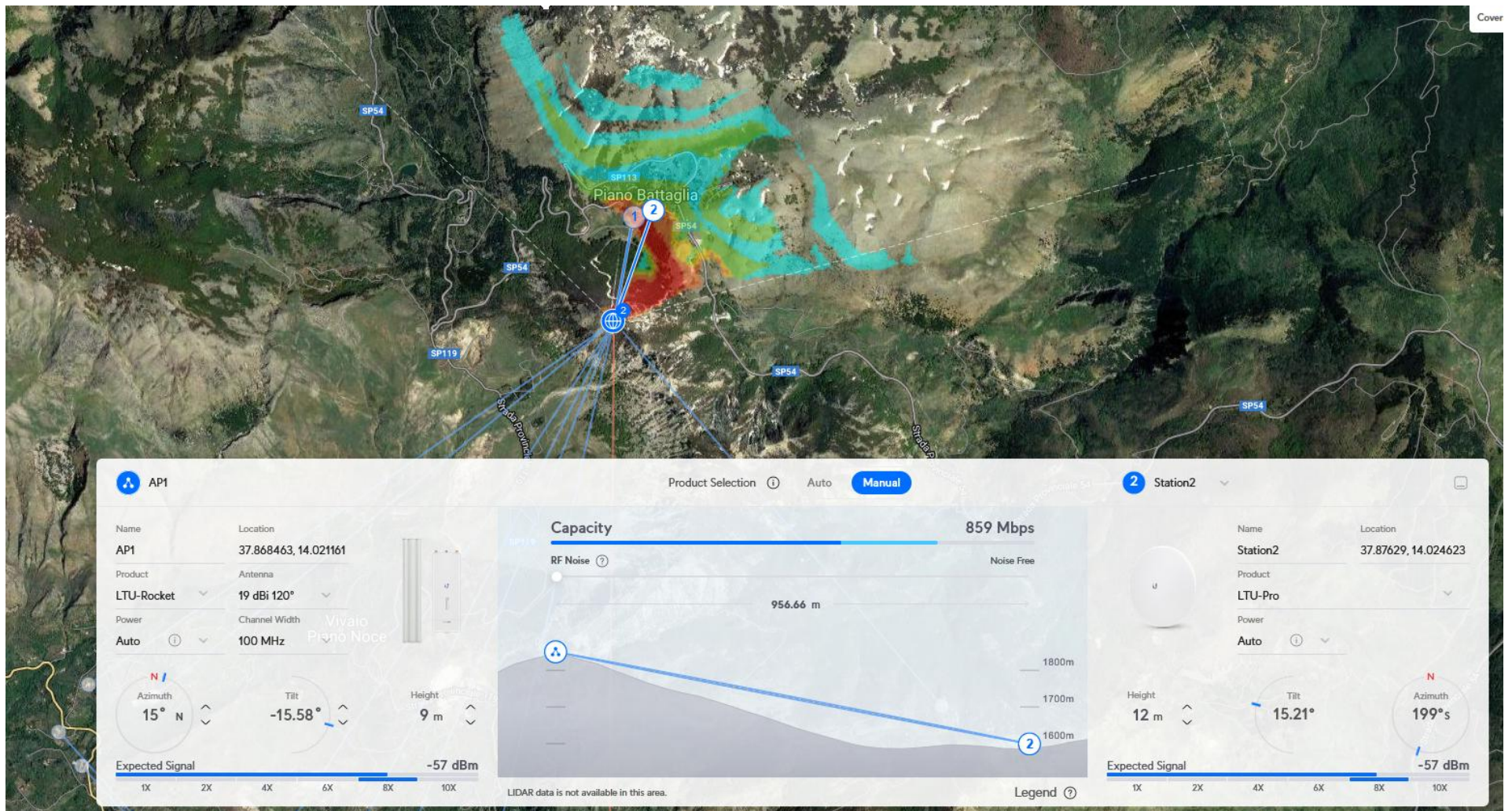


MAGLIA DIFFUSA LASCRI-GRATTERI-GIBILMANNA

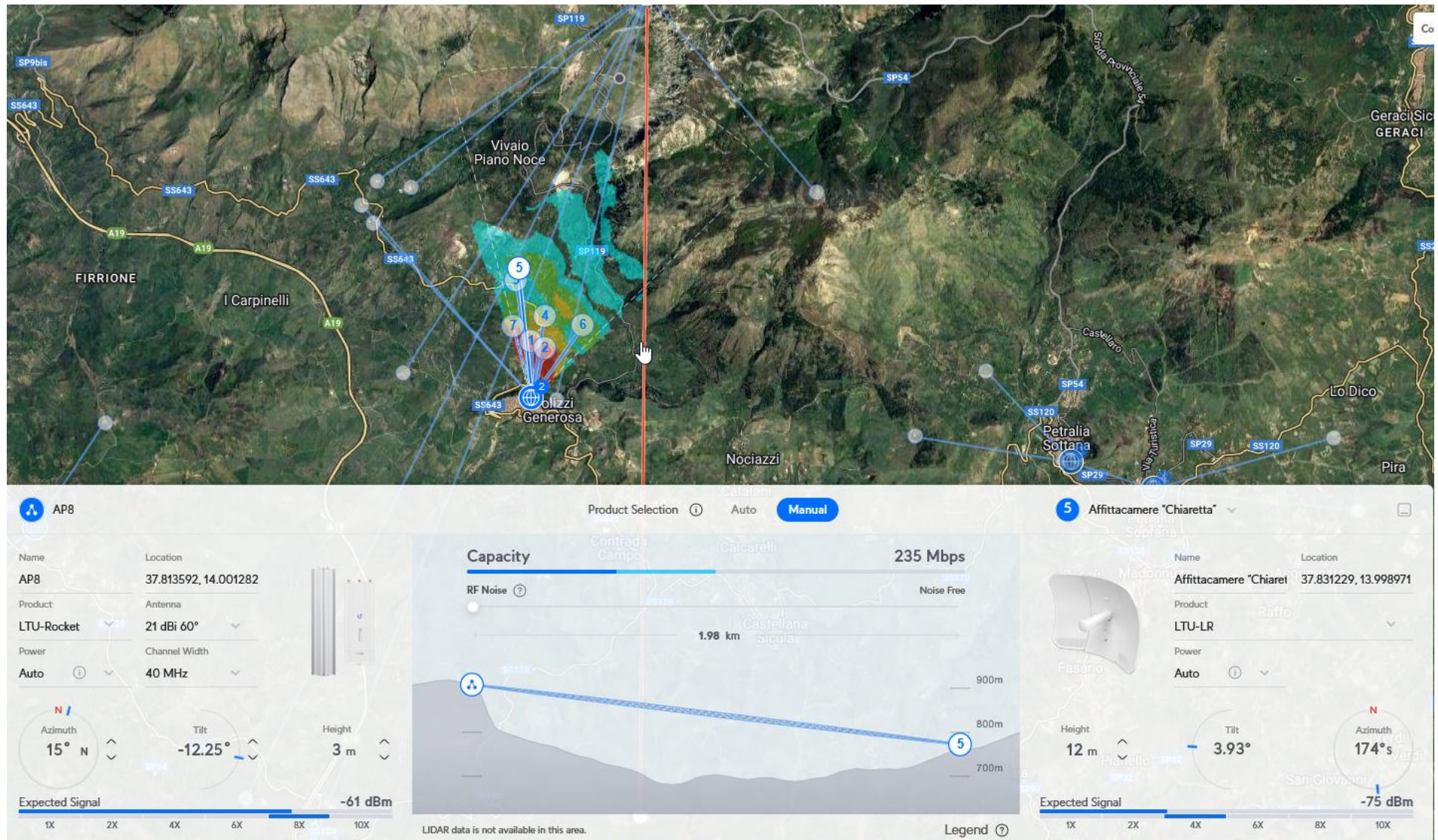


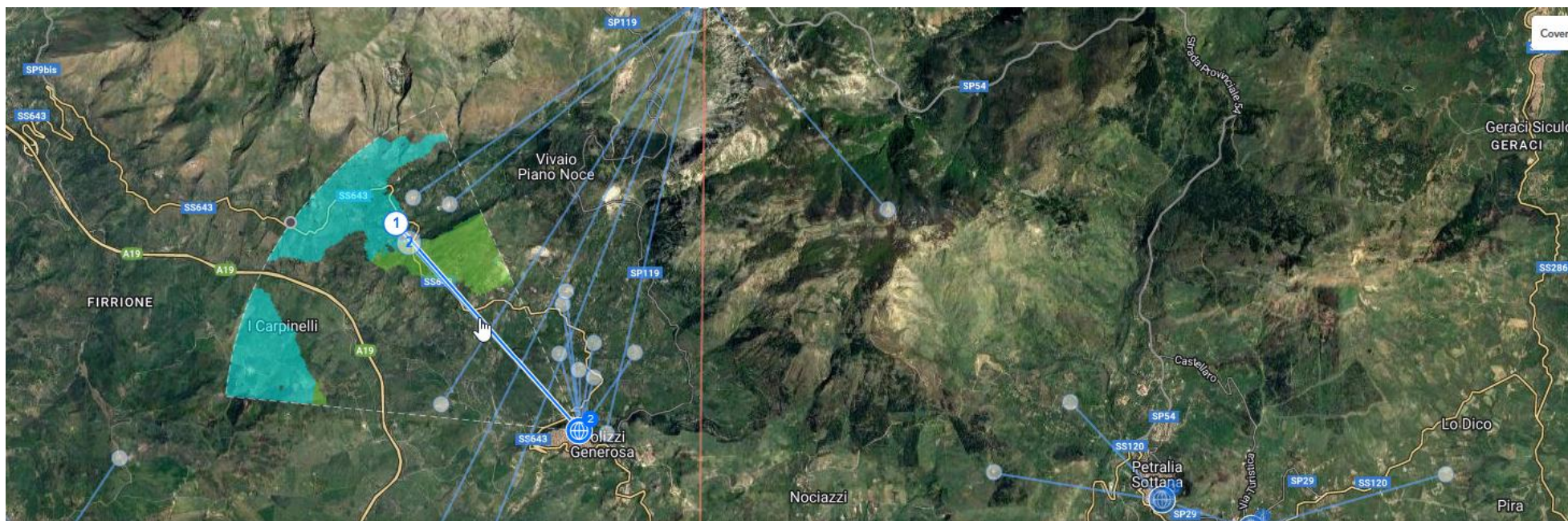
POP MONTE MUFARA



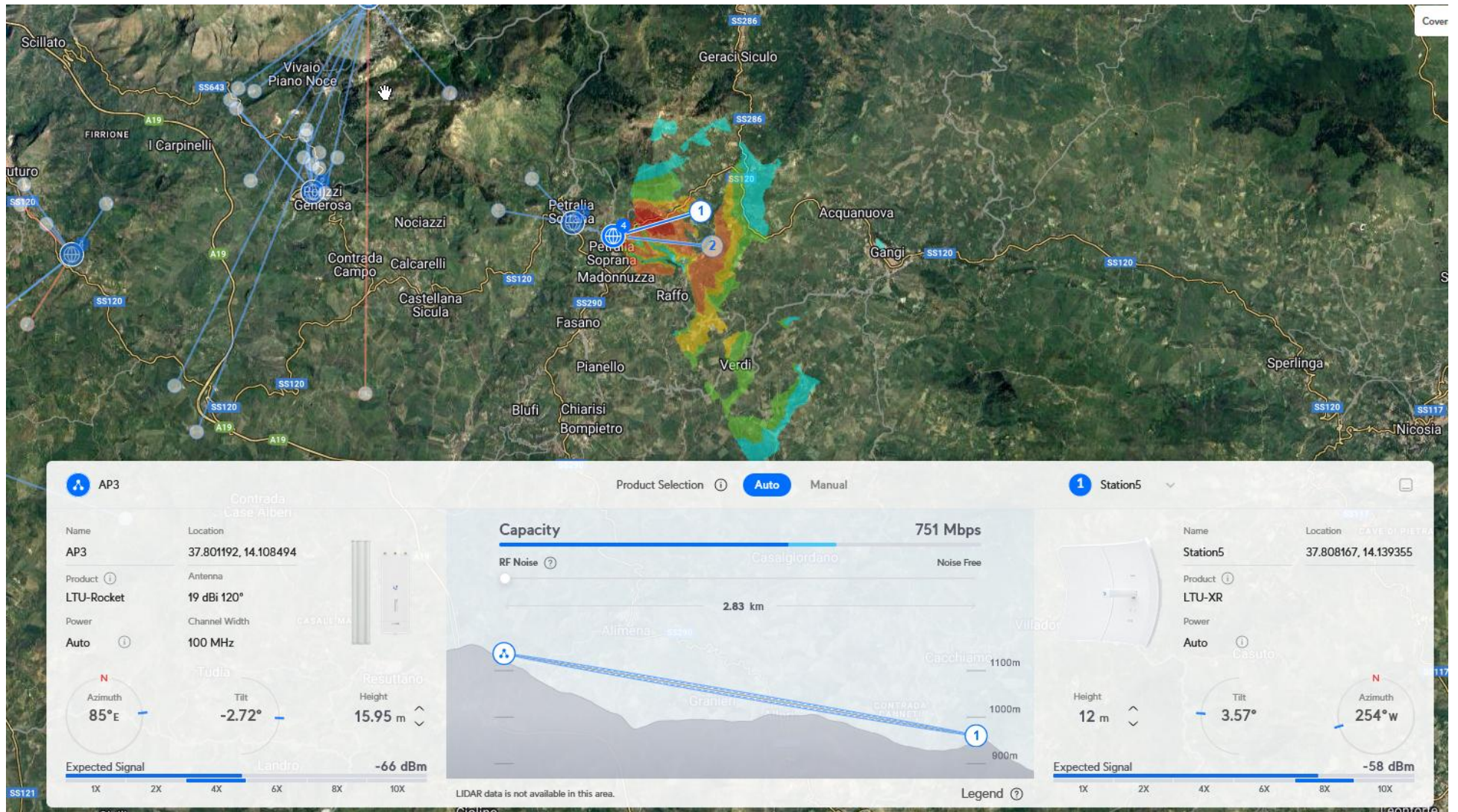


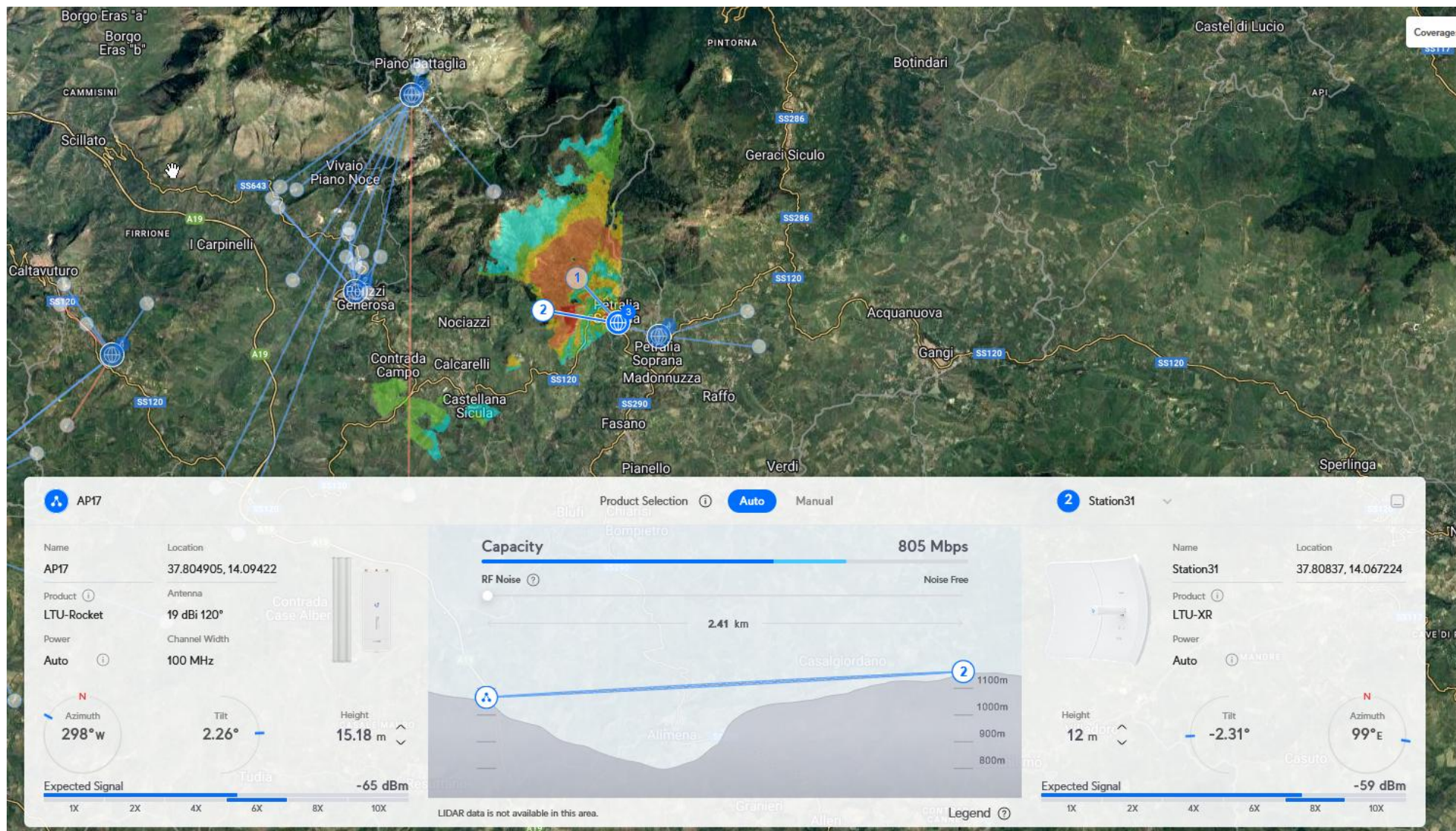
POLIZZI GENEROSA



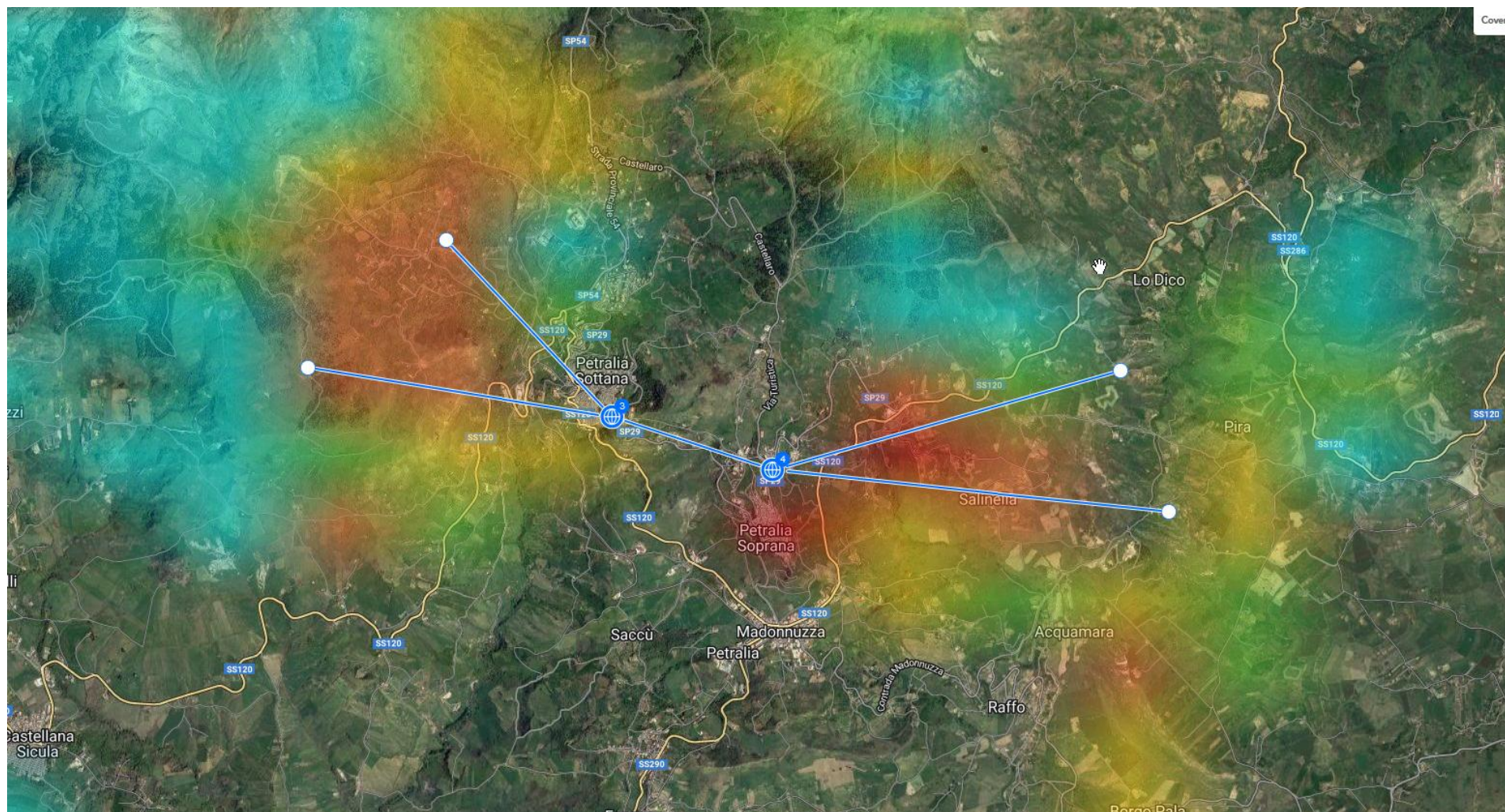


PETRALIA SOPRANA



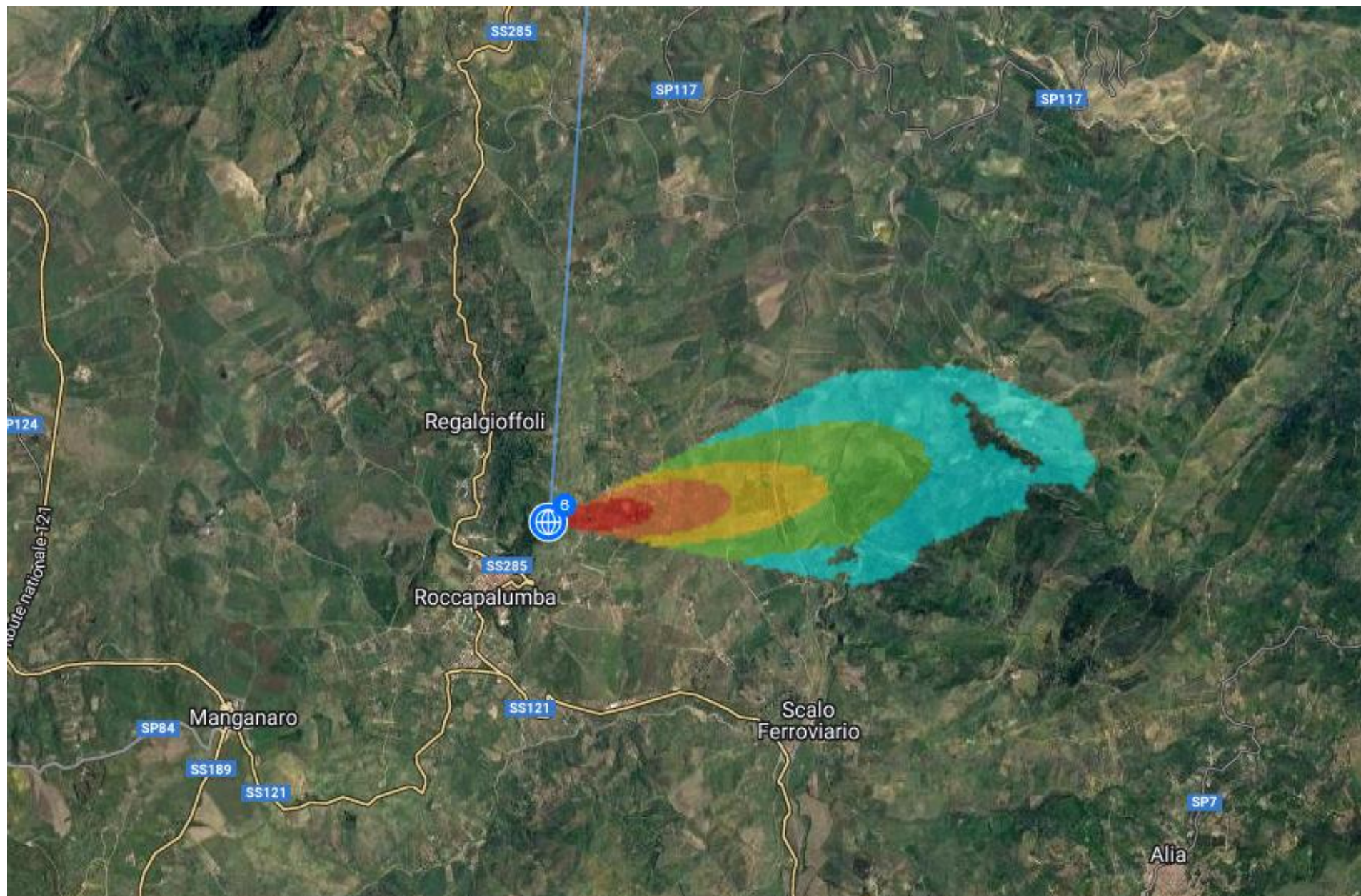


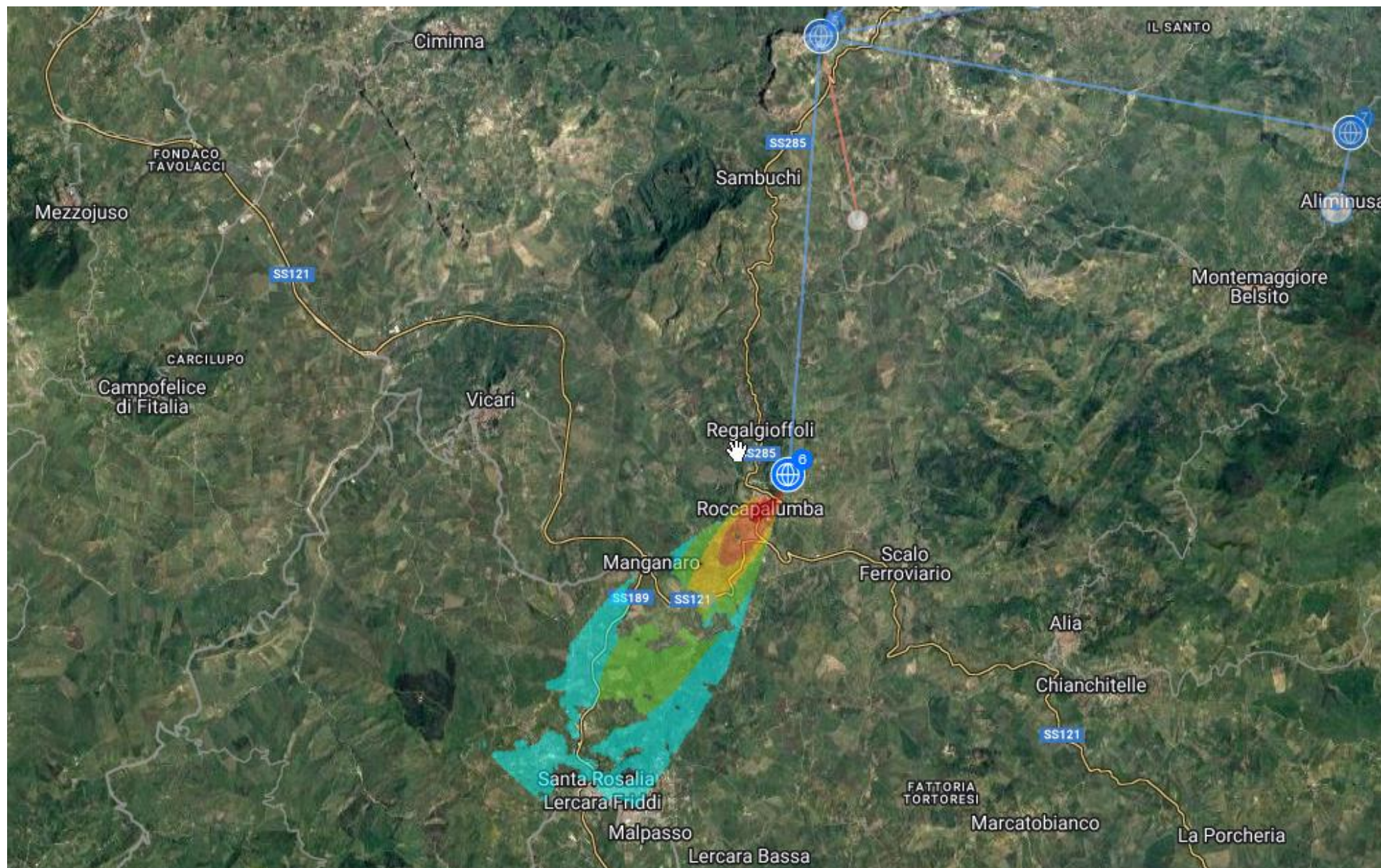
MAGLIA DIFFUSA PETRALIE



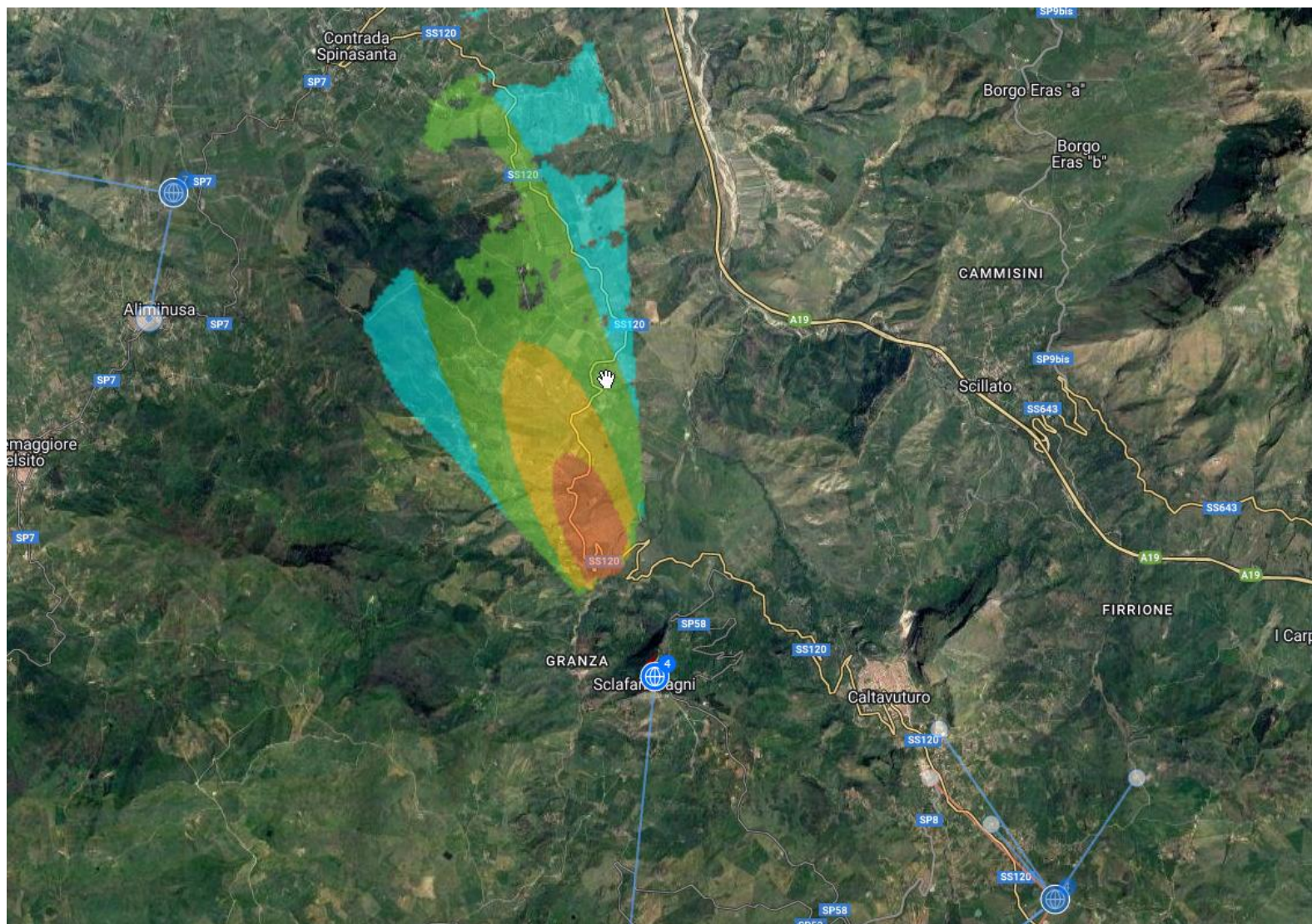
ROCCAPALUMBA

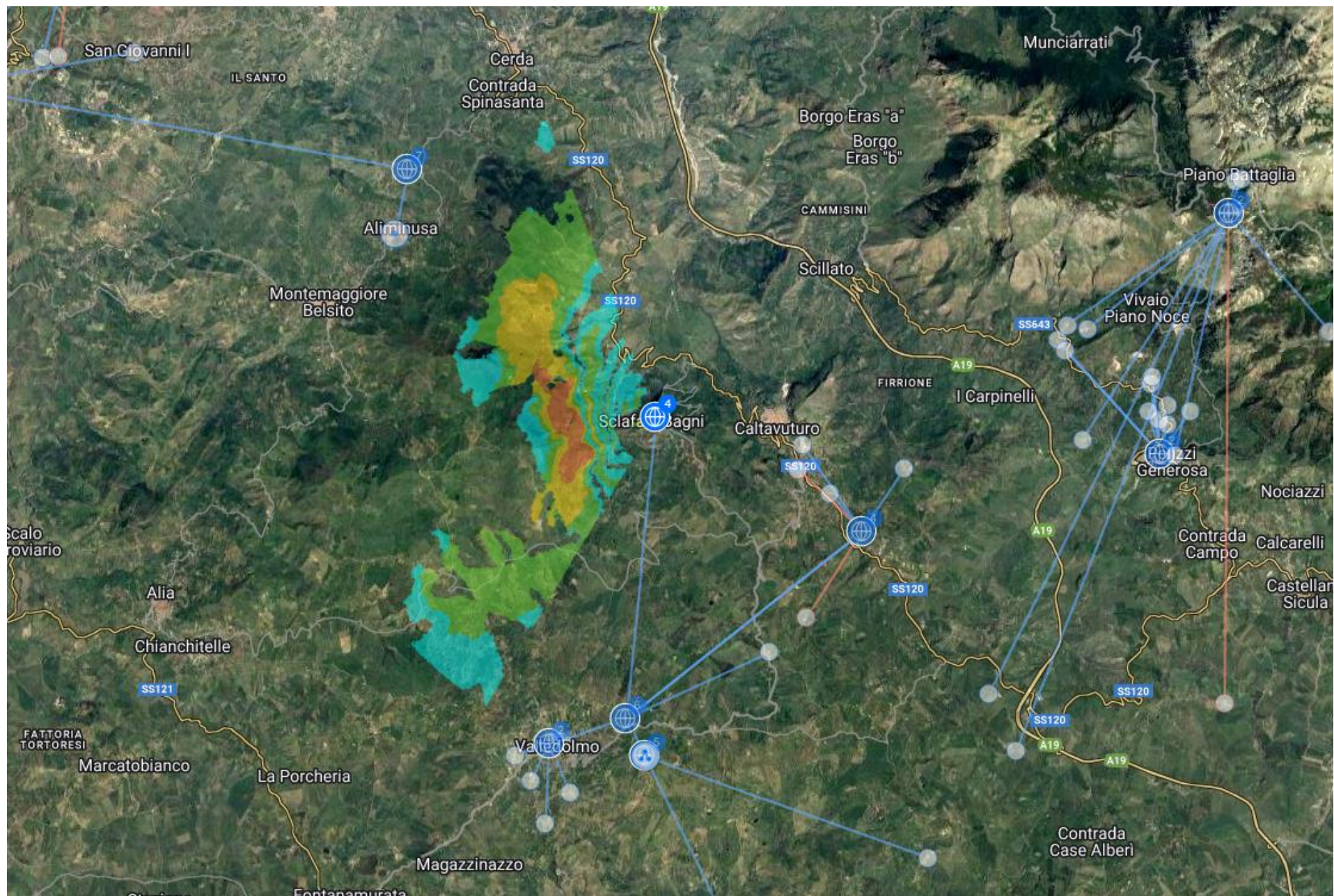


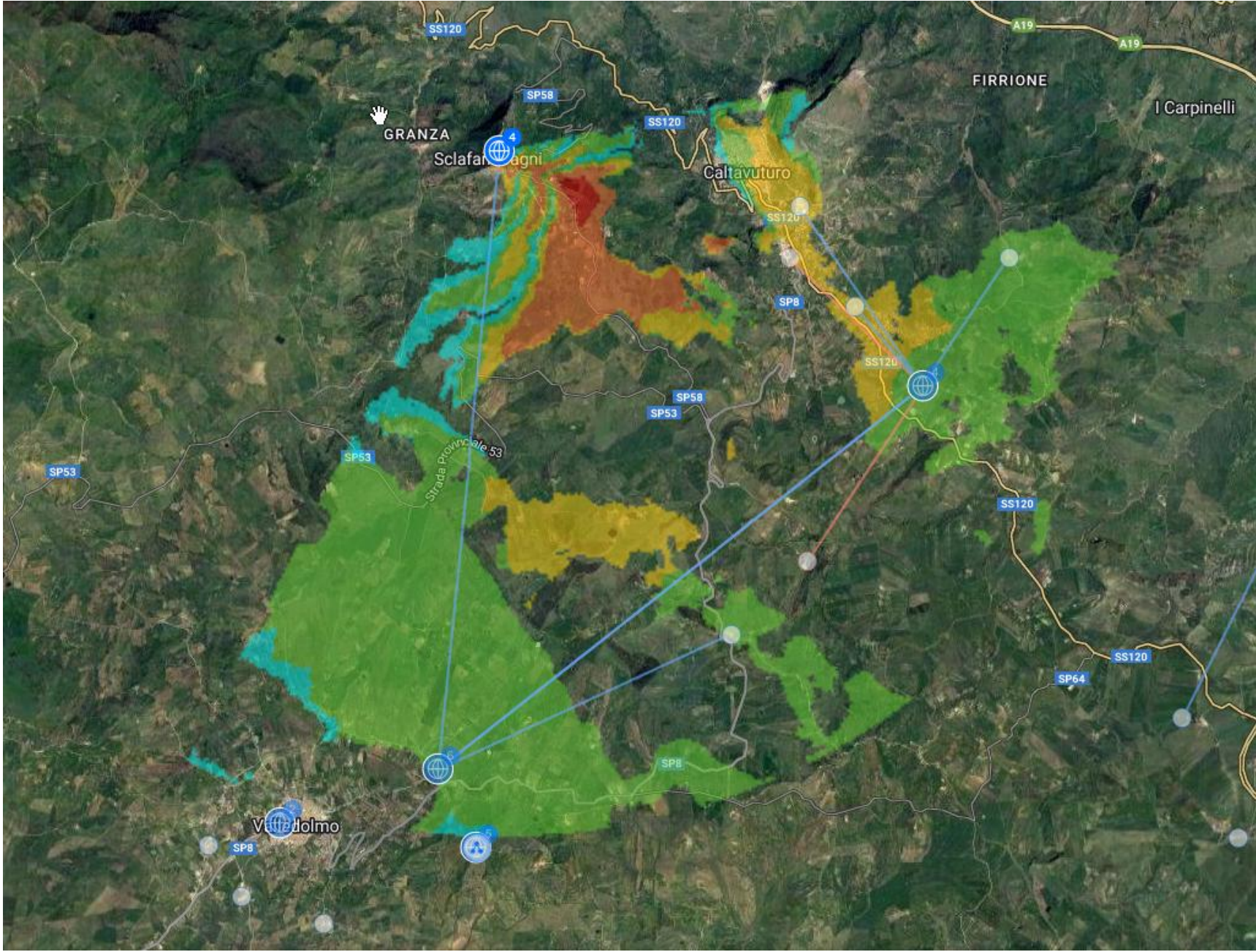




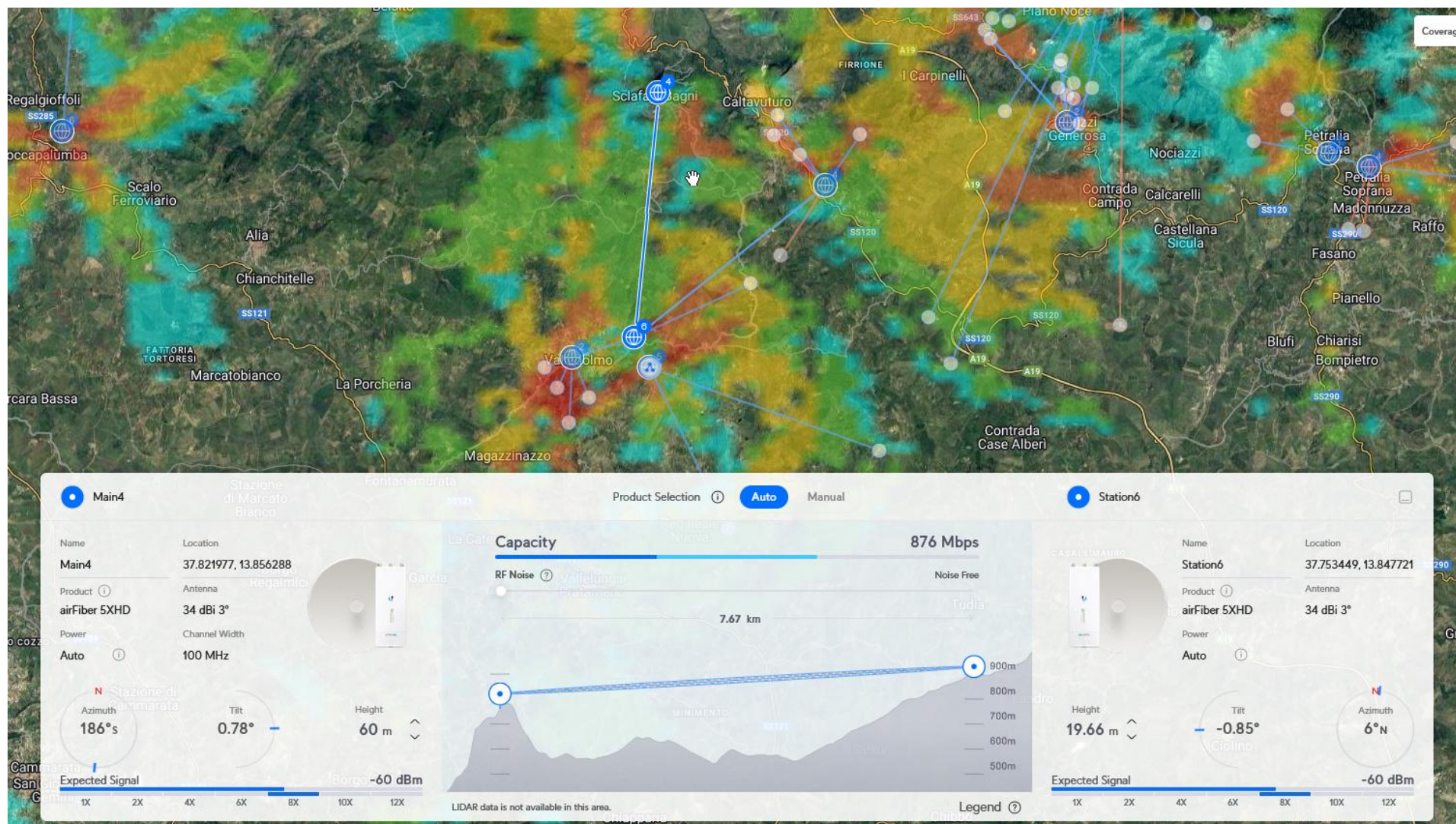
SCLAFANI BAGNI







VALLEDOLMO-SCLAFANI BAGNI rilegamento



VALLEDOLMO

